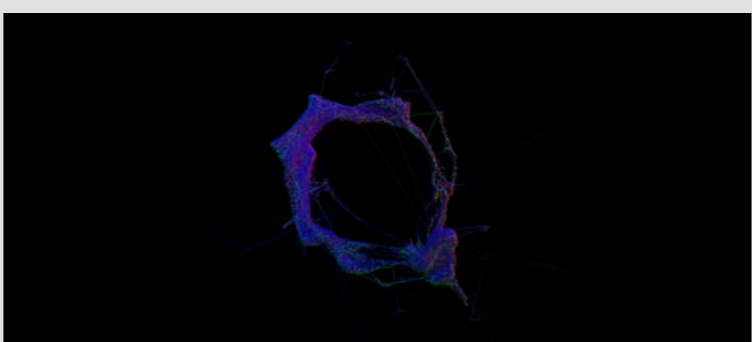


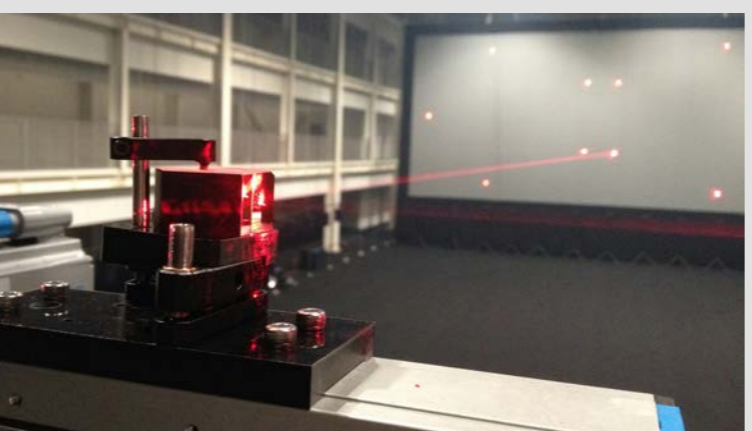
installation view at ACC, Guangju/South Korea, 640x1066, rgb



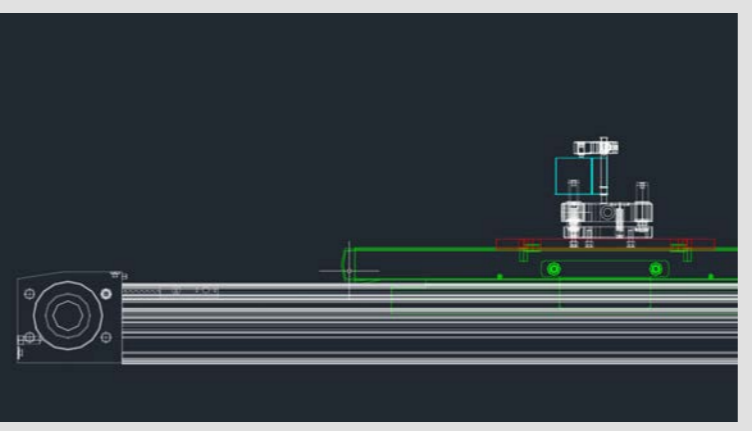
installation view, 1600x900, rgb



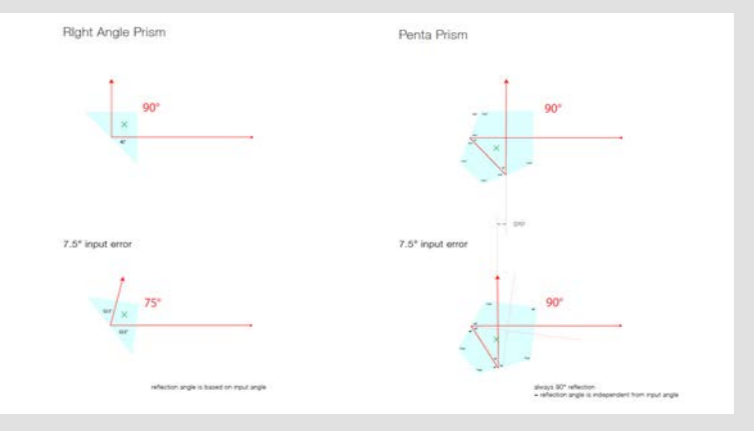
video material, 2560x1137, rgba



laser and prism, 3264x1846, rgb



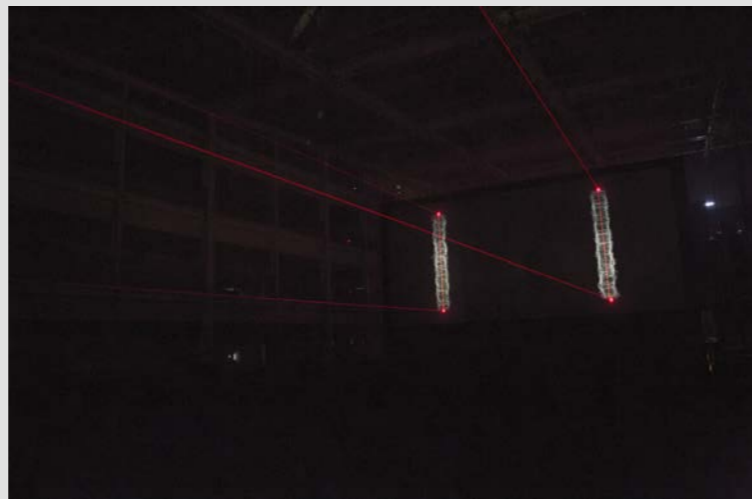
optomechanics, 1599x879, rgba



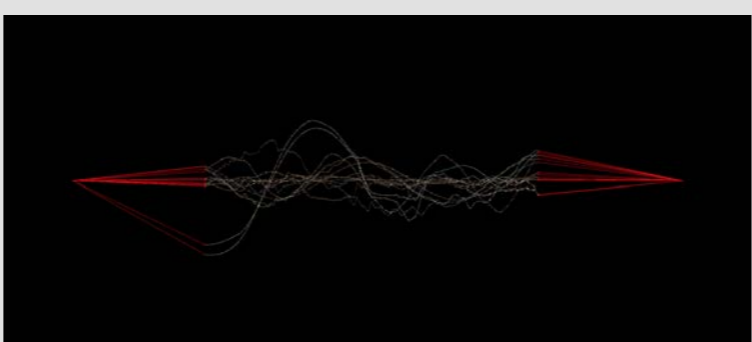
tech drawing(prism), 1664x893, rgba



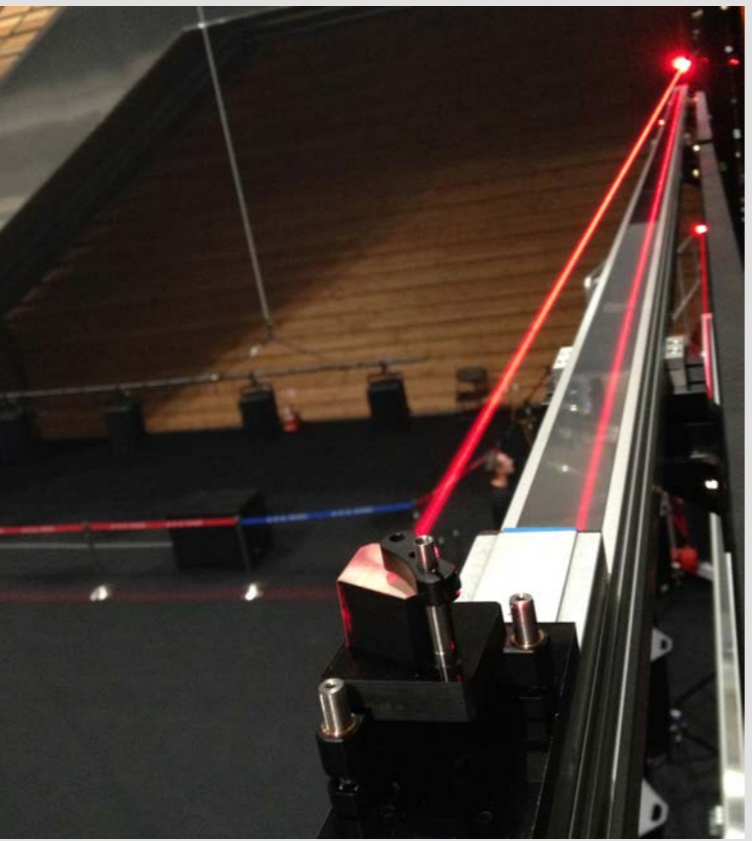
actuator test, 2448x1418, rgb



installation view, 1600x1066, rgb



video material, 2560x1137, rgba



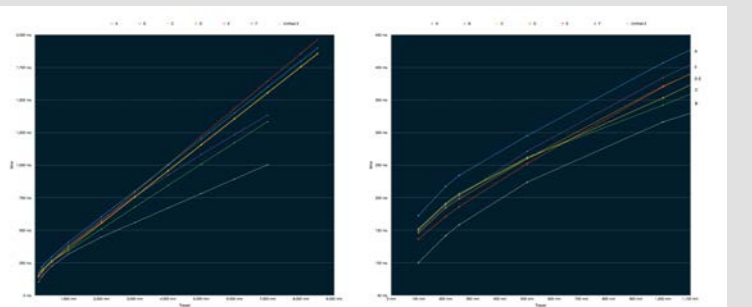
laser and prism, 2448x2730, rgb



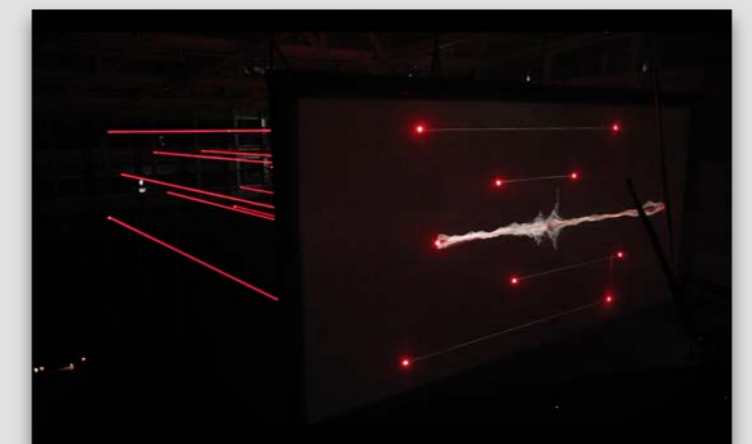
truss structure, 3264x2448, rgb



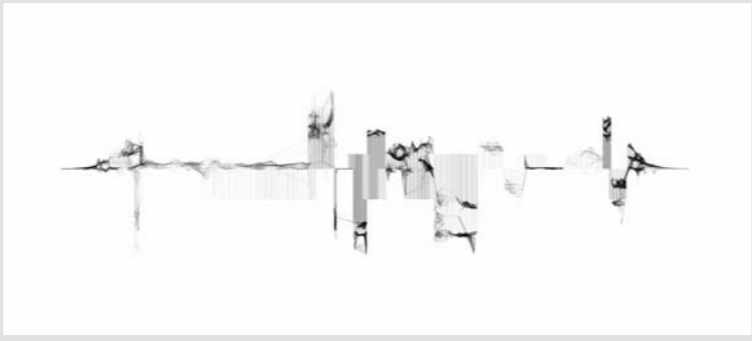
optomechanics, 2448x2448, rgb



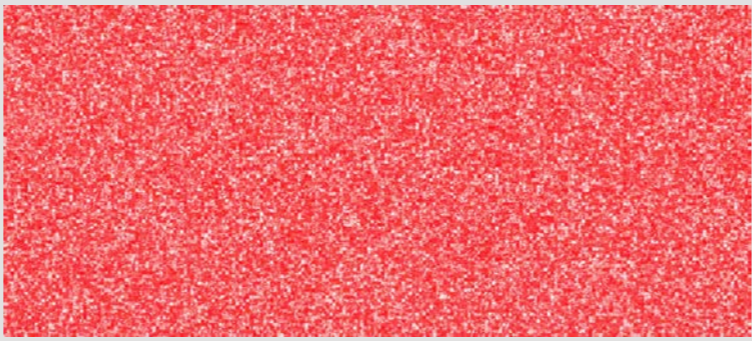
speed simulation, 2086x881, rgba



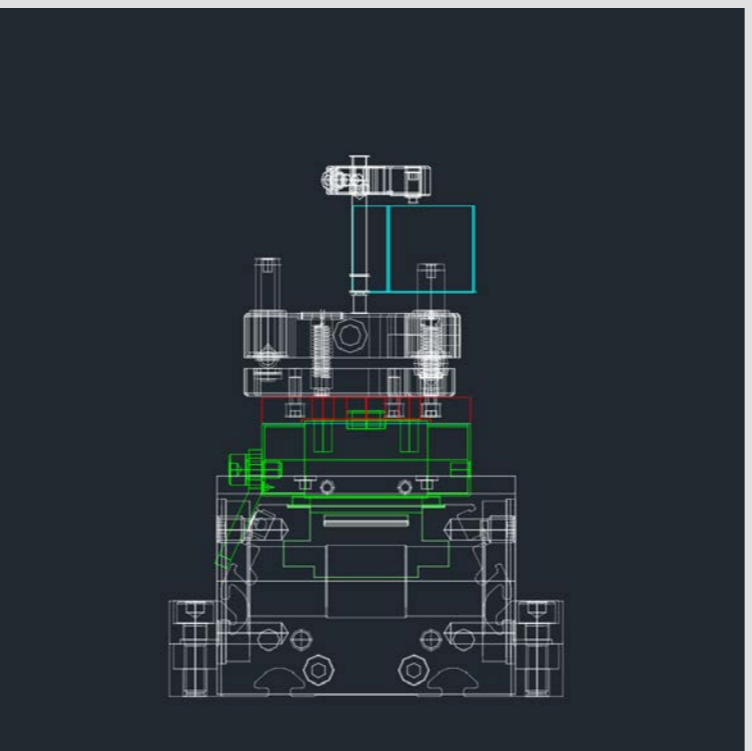
installation view, 3584x2324, rgba



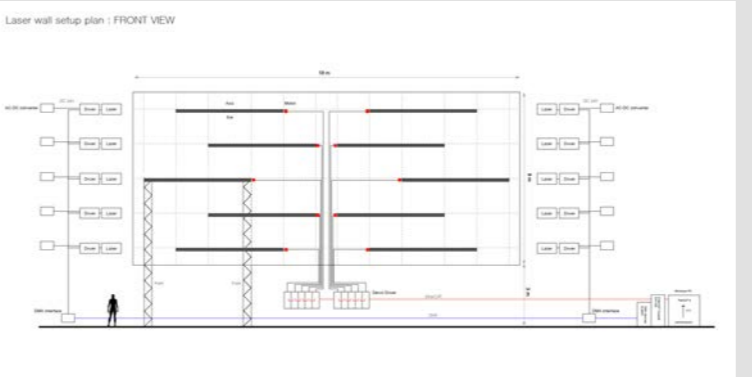
video material, 2560x1137, rgba



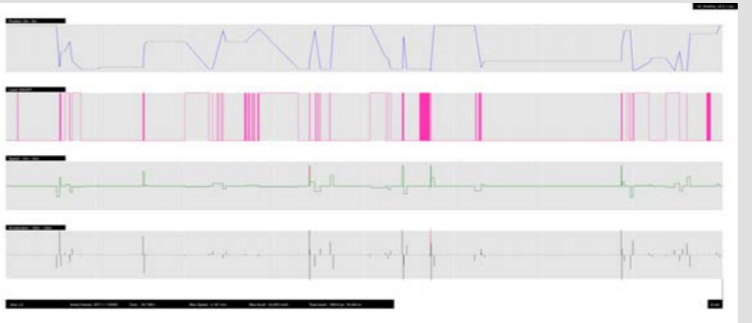
video material, 2560x1137, rgba



optomechanics, 1101x1101, rgba



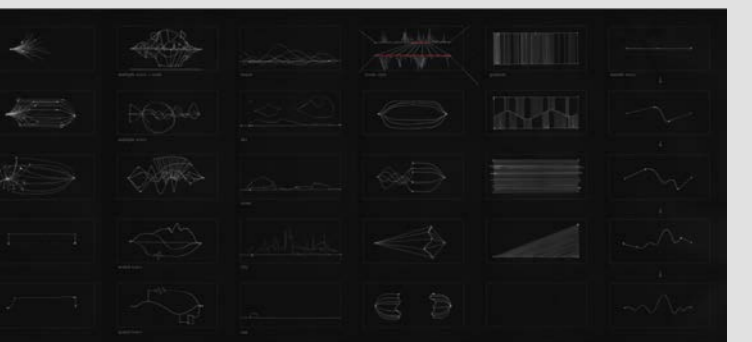
blue print, 2235x1129, rgba



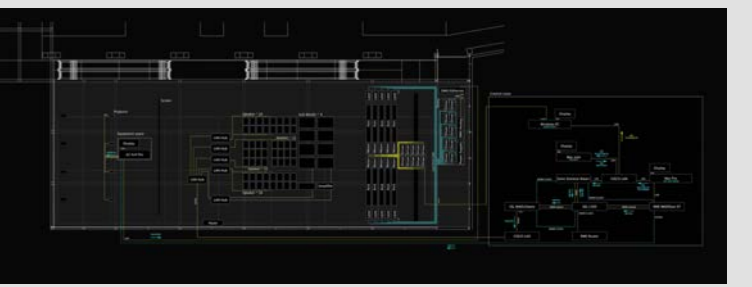
motion composition, 2500x1080, rgb



optomechanics, 2448x2984, rgb



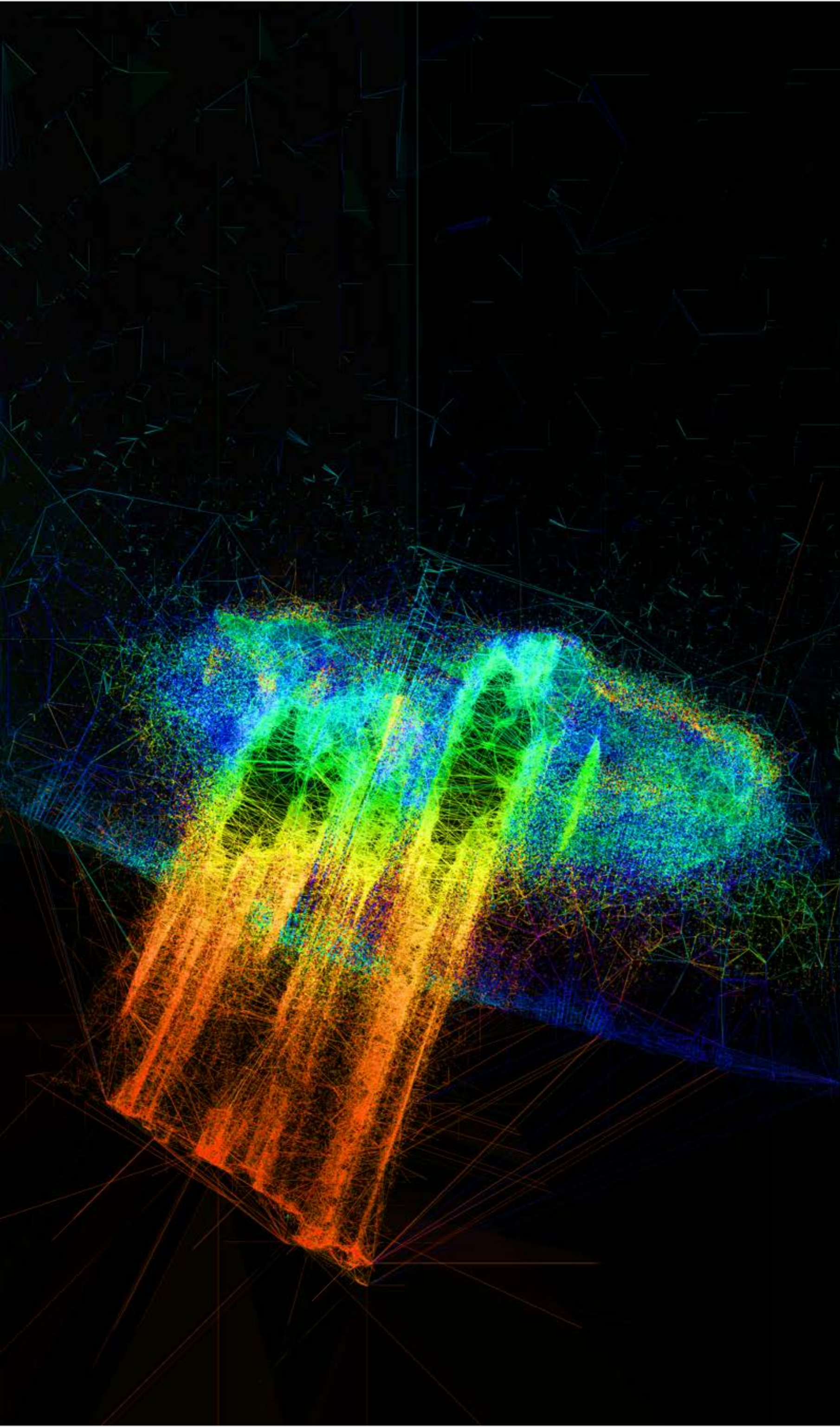
idea sketch, 1920x877, rgb



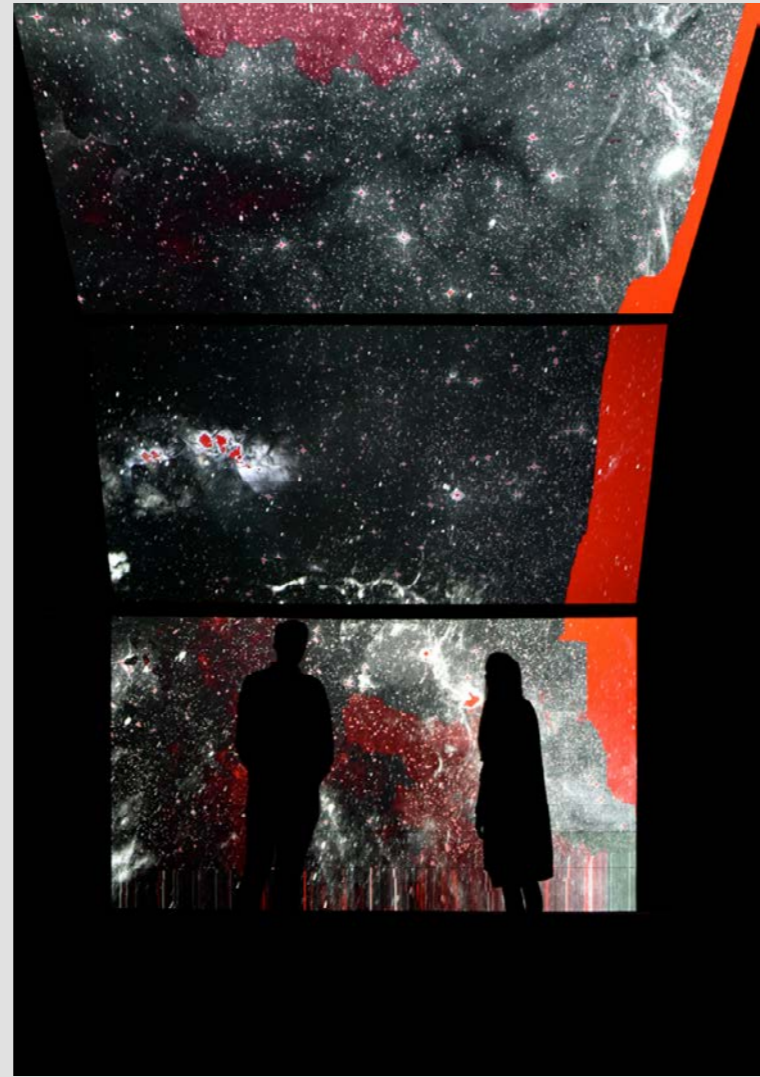
equipment diagram, 5000x1846, rgb

node 5:5

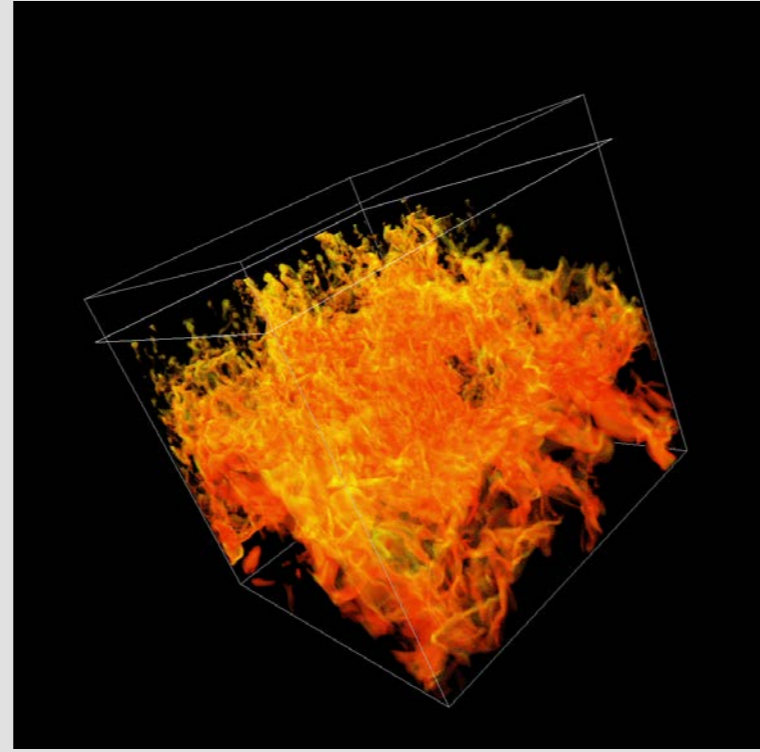
client : Studio RYOICHI KUROKAWA
 year : 2017
 format : Audiovisual Kinetic installation, 4K projection, Wave Field Synthesis, 10ch linear actuator, 10ch laser, 08'00" loop
 description : node 5:5 is a large-scale audiovisual installation using video projection, kinetic laser modules and Wave Field Synthesis.
 contribution : programming, video material, motion control system, mechanical design
 web : www.ryoichikurokawa.com



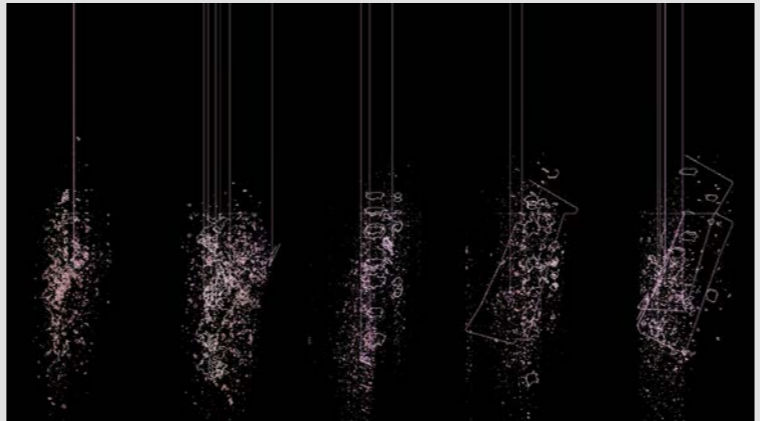
video material, 1920x3240, rgb



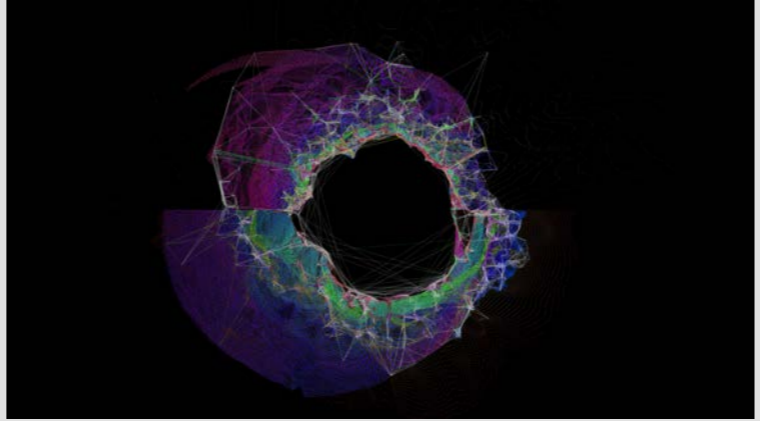
installation view at FACT Liverpool, 640x920, rgb



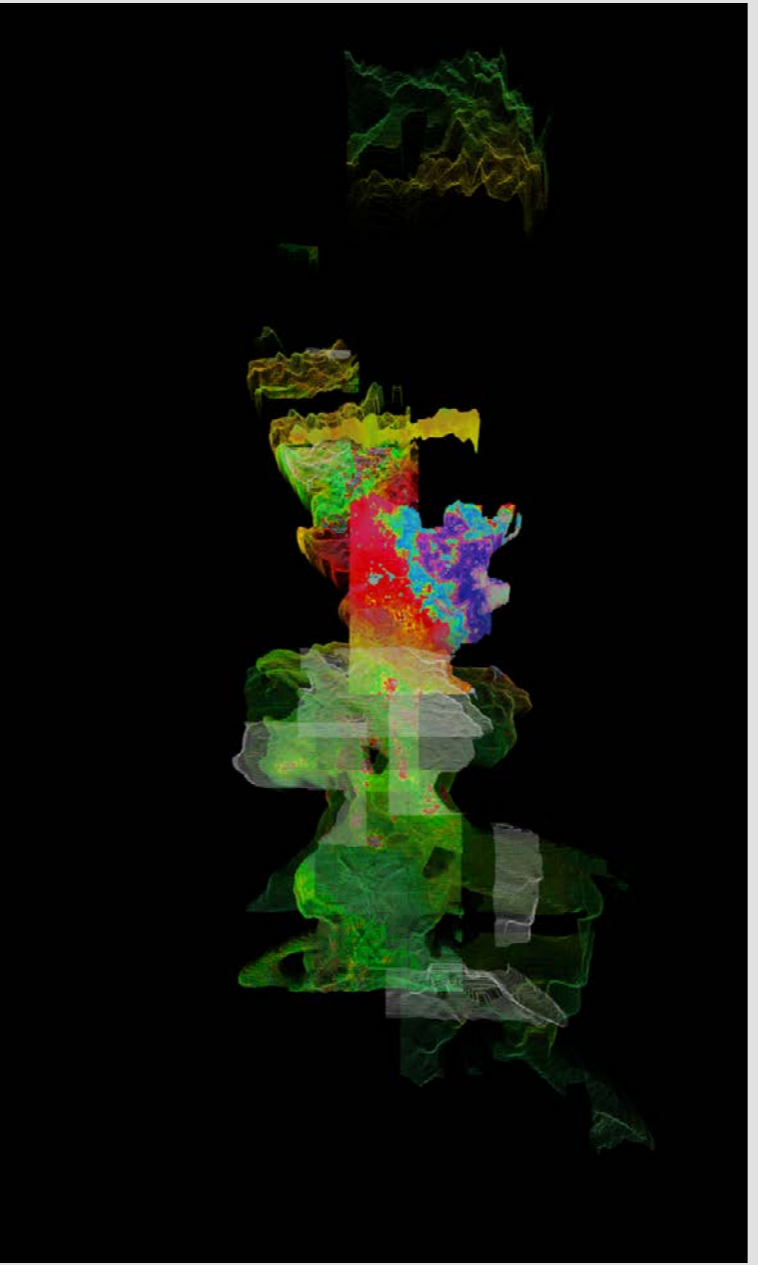
video material, 1080x1080, rgb



video material, 1904x1068, rgba



video material, 1920x1080, rgba



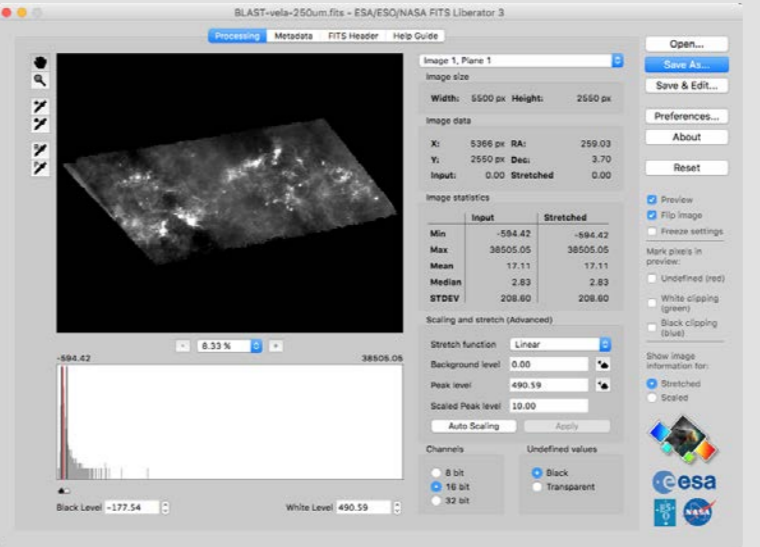
video material, 1920x3240, rgb



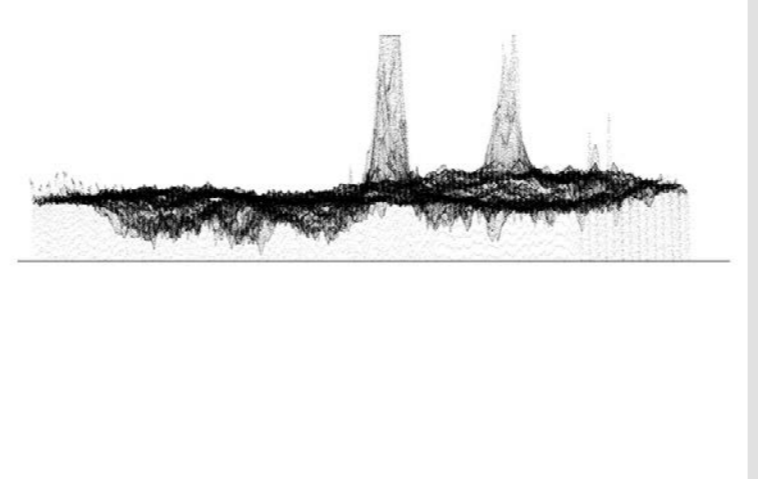
video material, 1920x1080, rgb



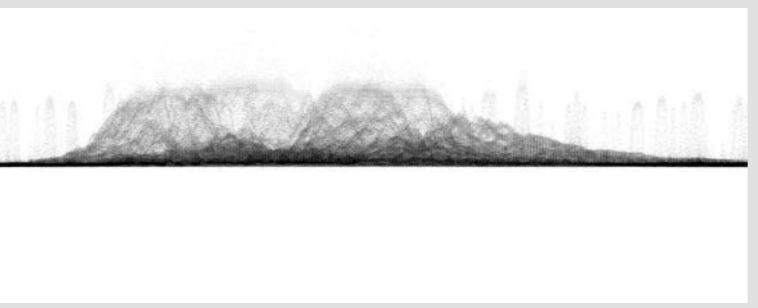
original data, 1095x507, rgba



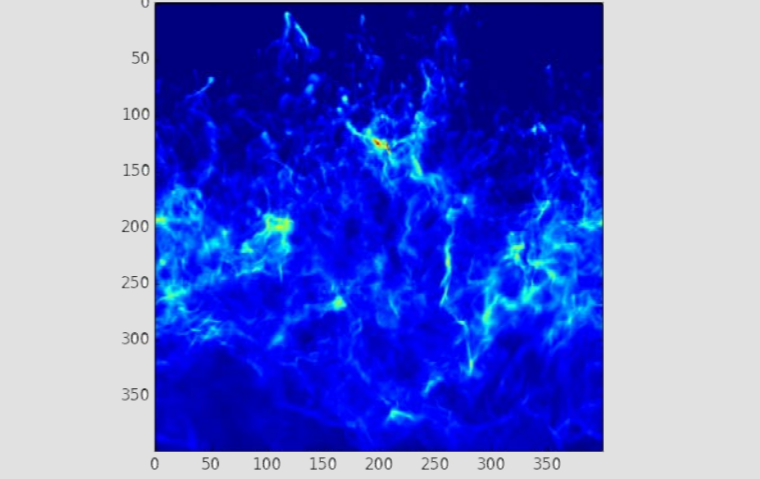
original data, 970x708, rgba



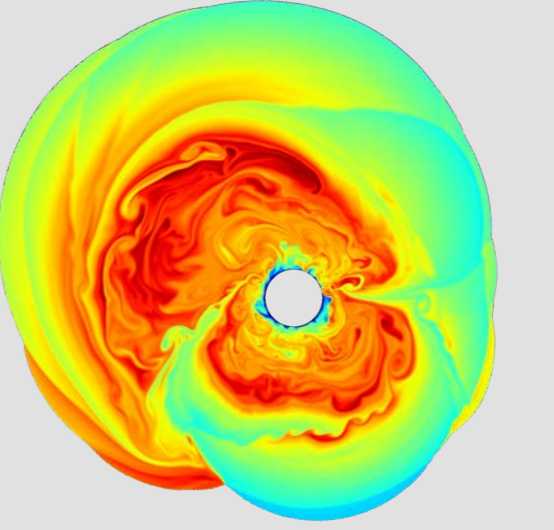
audio material, 829x540, rgb



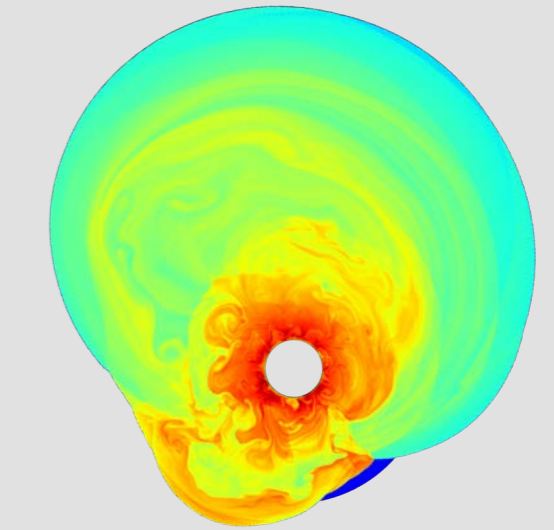
audio material, 1370x540, rgb



original data, 800x600, rgba



original data, 2200x2200, rgba



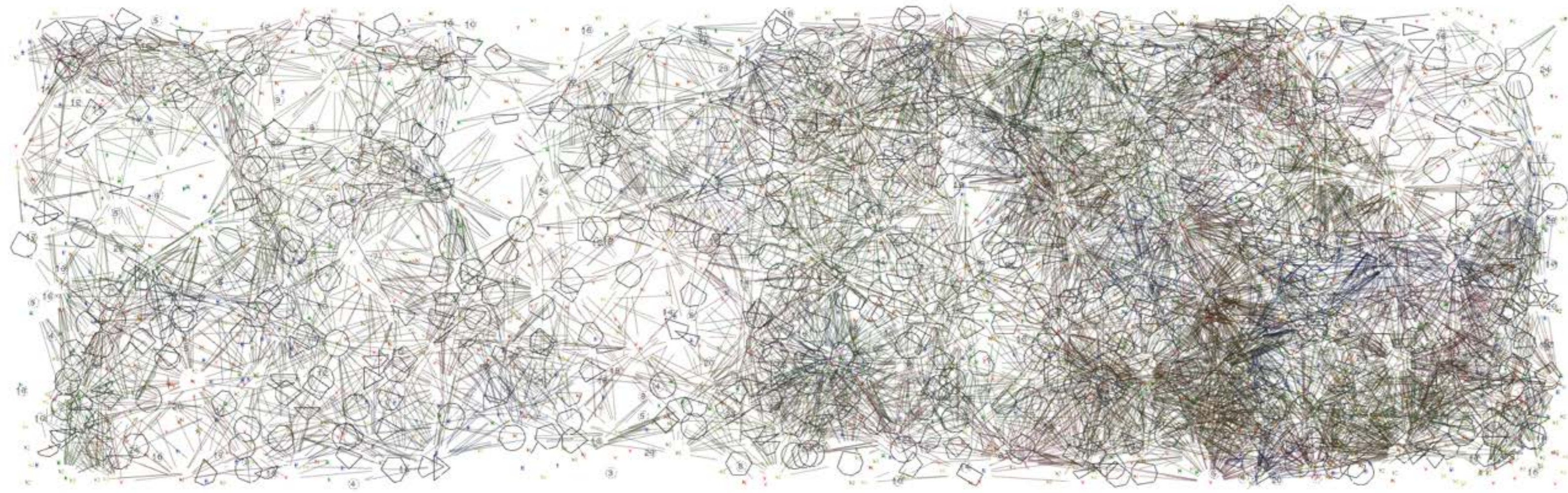
original data, 2200x2200, rgba



original data, 796x2780, rgb

unfold

client : Studio RYOICHI KUROKAWA
yaer : 2016
format : Audiovisual installation, 3ch HD projection, 6.1ch surround sound, Tactile transducer, 08'00" loop
description : unfold is a major new commission by acclaimed Japanese artist Ryoichi Kurokawa, exploring the birth and evolution of stars in a groundbreaking immersive and tactile audiovisual installation.
contribution : programming, video material, sound material, data manipulation
web : www.ryoichikurokawa.com/project/unfold.html

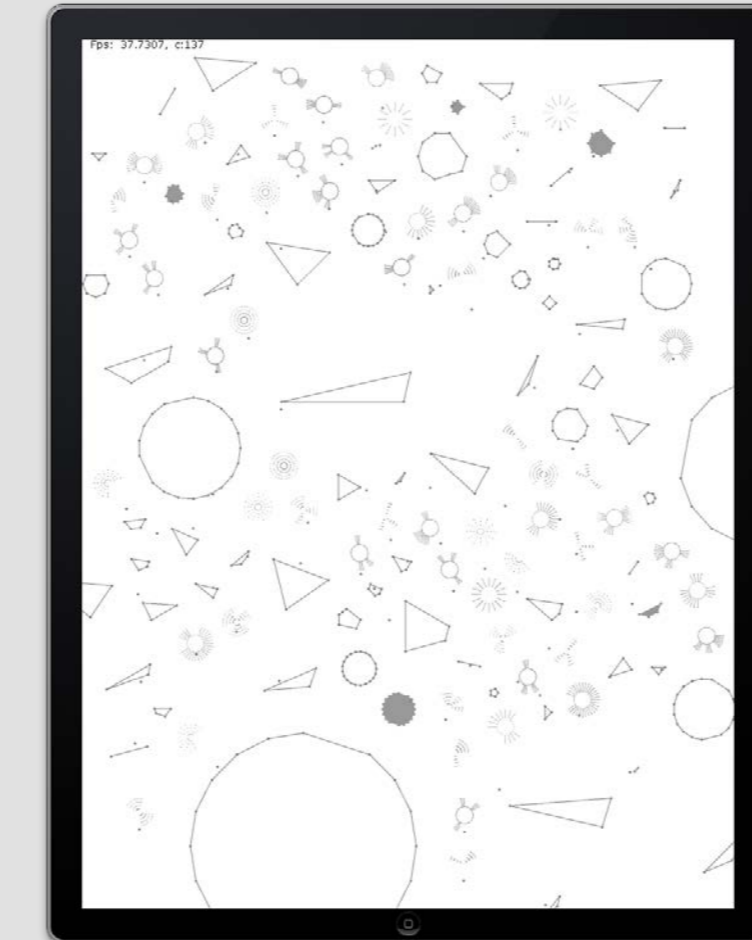


```
dt_      All: 3400      sleep: 187500
         noteOn: 870    freq: 0
         Param: 2165   amp: 50000
         output: 365
```

noteNum vel dur L R cc12 cc13 cc14



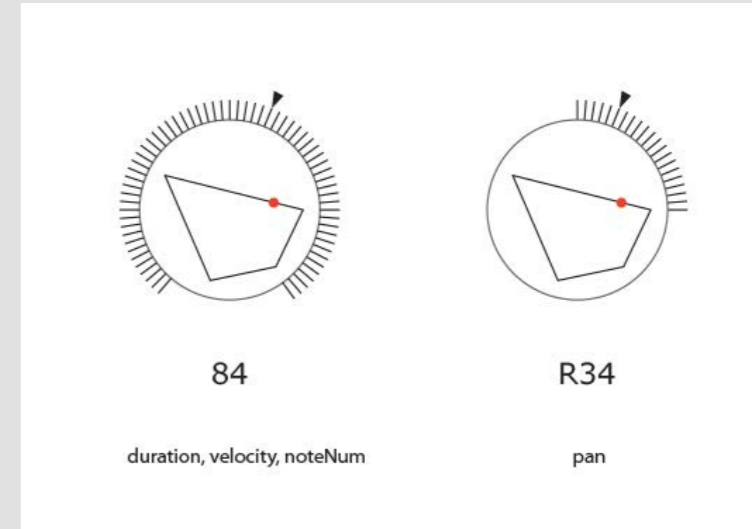
application window, 850x1059, rgba



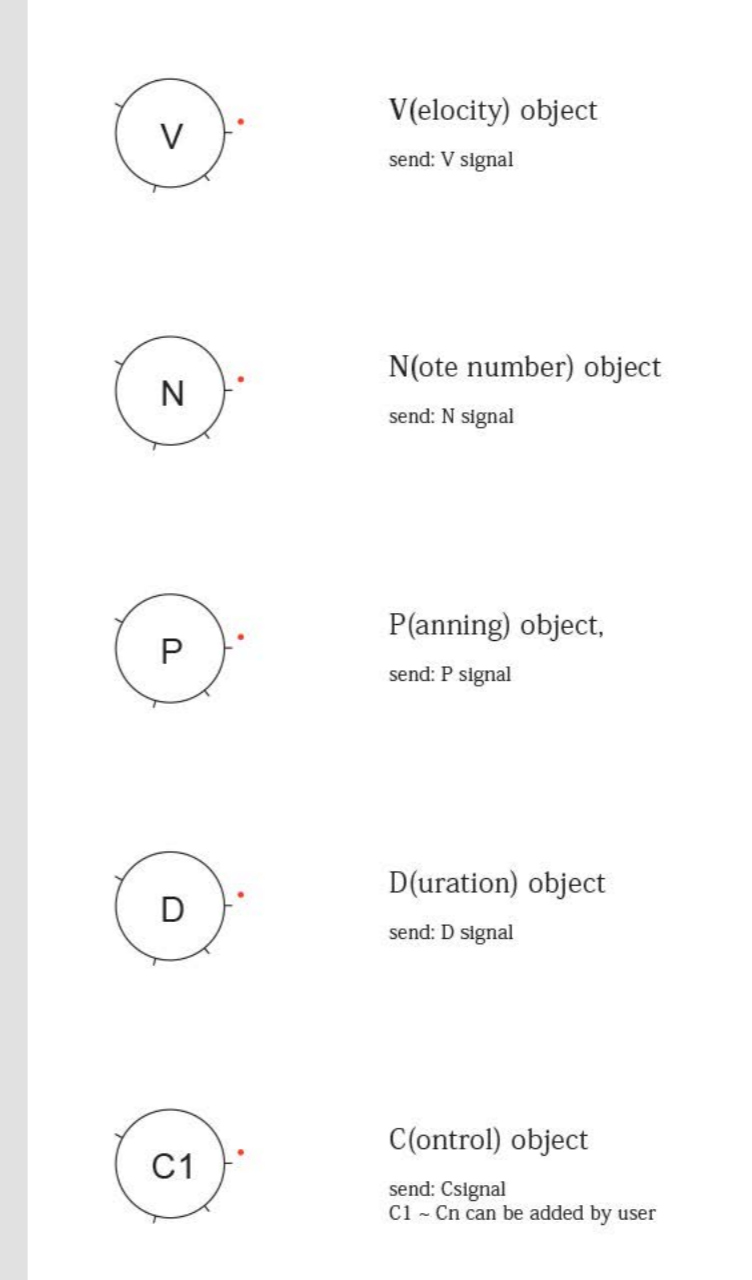
iPad version, 880x1136, rgba

Quaternizer									
id	name	type	value	unit	min	max	step	color	font
1
2
3
4
5
6
7
8
9
10
11
12
13
14
15
16
17
18
19
20
21
22
23
24
25
26
27
28
29
30
31
32
33
34
35
36
37
38
39
40
41
42
43
44
45
46
47
48
49
50
51
52
53
54
55
56
57
58
59
60
61
62
63
64
65
66
67
68
69
70
71
72
73
74
75
76
77
78
79
80
81
82
83
84

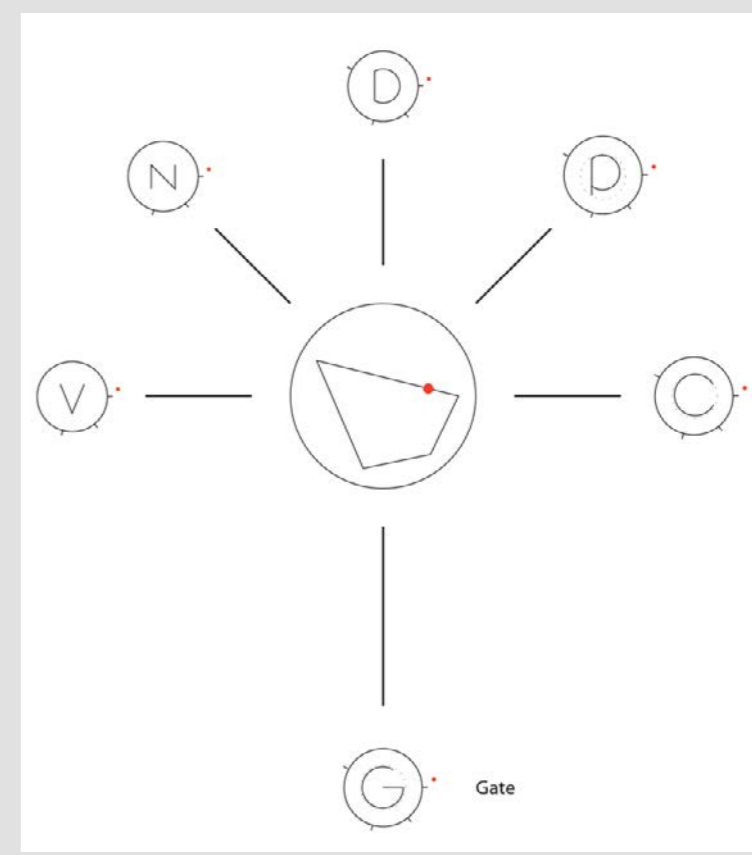
Max patch for desktop version, 1306x1118, rgba



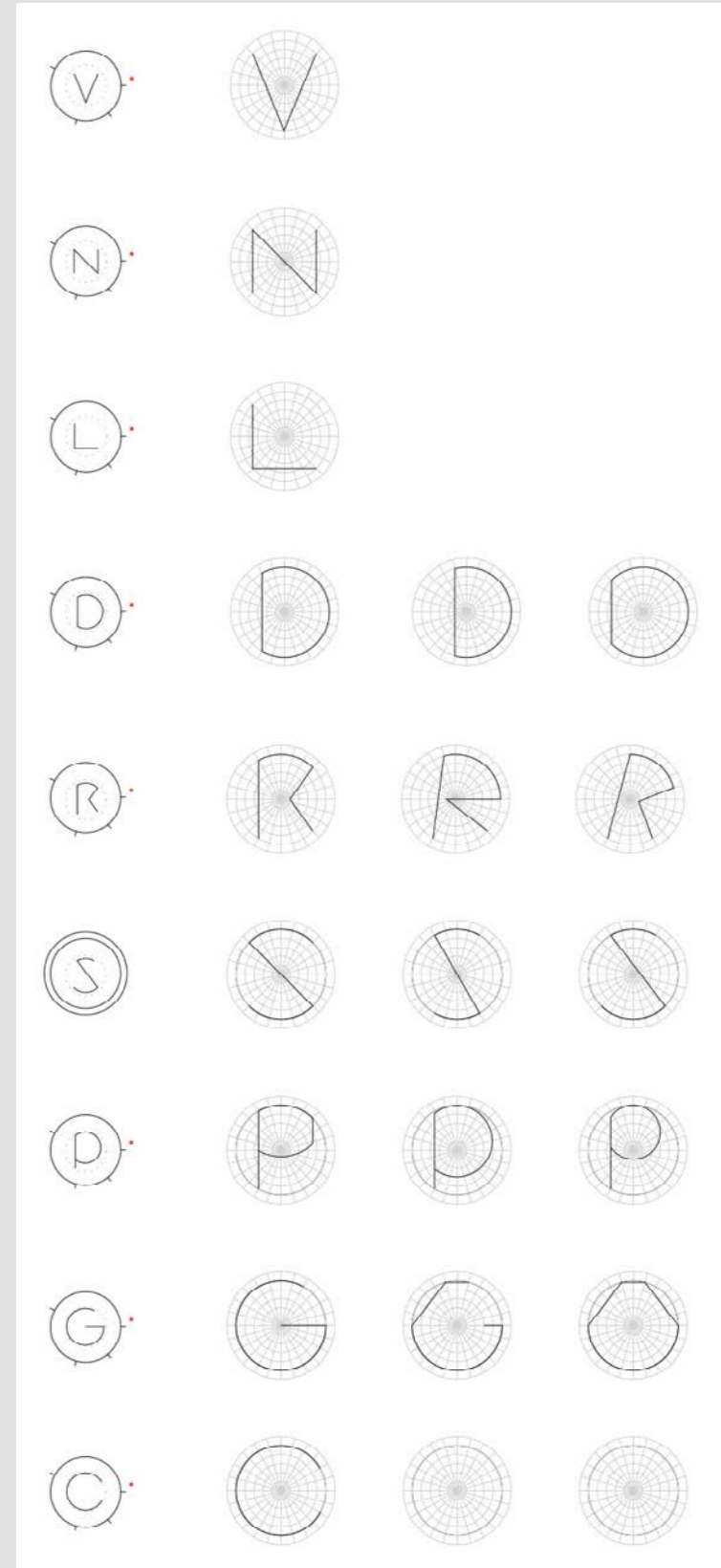
concept, 531x374, rgb



concept, 561x963, rgb



concept, 780x877, rgb



font design, 827x1826, rgb

application window, 1900x1400, rgb

dt

client : personal project
 yaer : 2014
 format : audiovisual application
 description : Rhythm composer based on binary rhythm composition system.
 contribution : concept, programming, visual, sound
 web : ---



installation view, 4140x3456, rgb



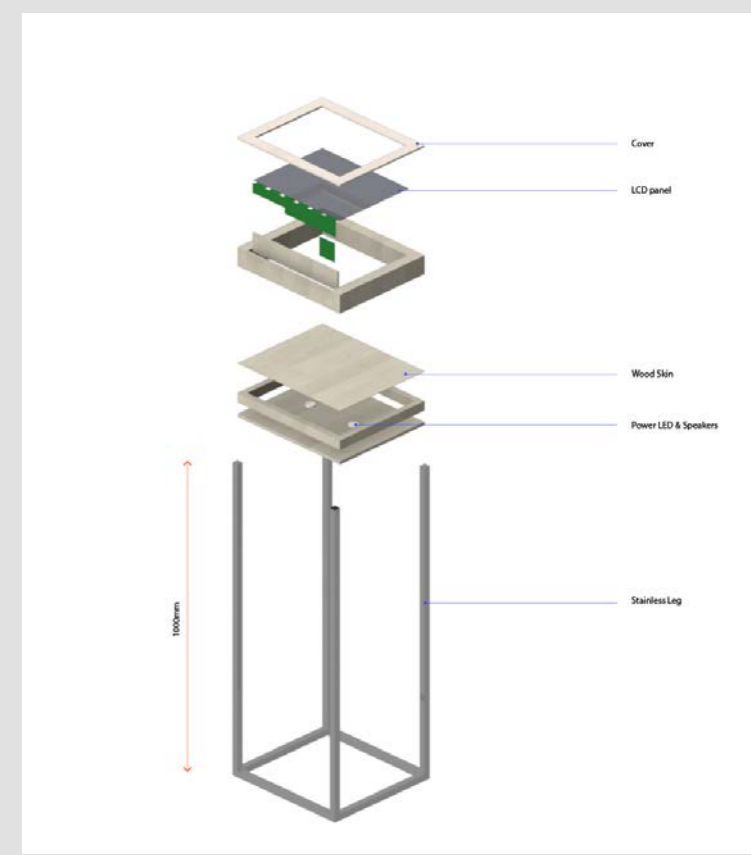
installation view, 1551x1080, rgba



hardware test, 5184x3456, rgb



video material, 1259x1010, rgb



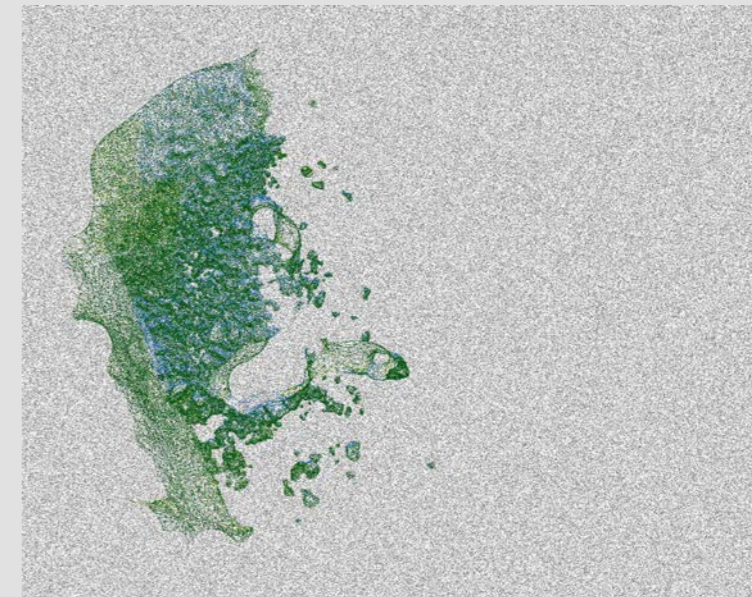
hardware system, 960x1080, rgb



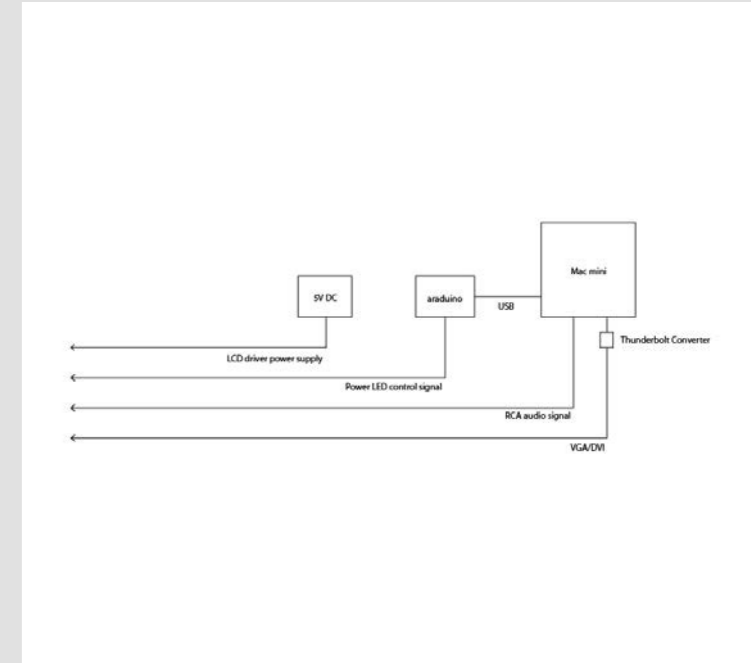
installation view, 4695x2738, rgb



hardware test, 3664x2886, rgb



video material, 1268x1011, rgb



connection diagram, 960x854, rgb



3D simulation, 1920x1080, rgba



video material, 1271x1021, rgb



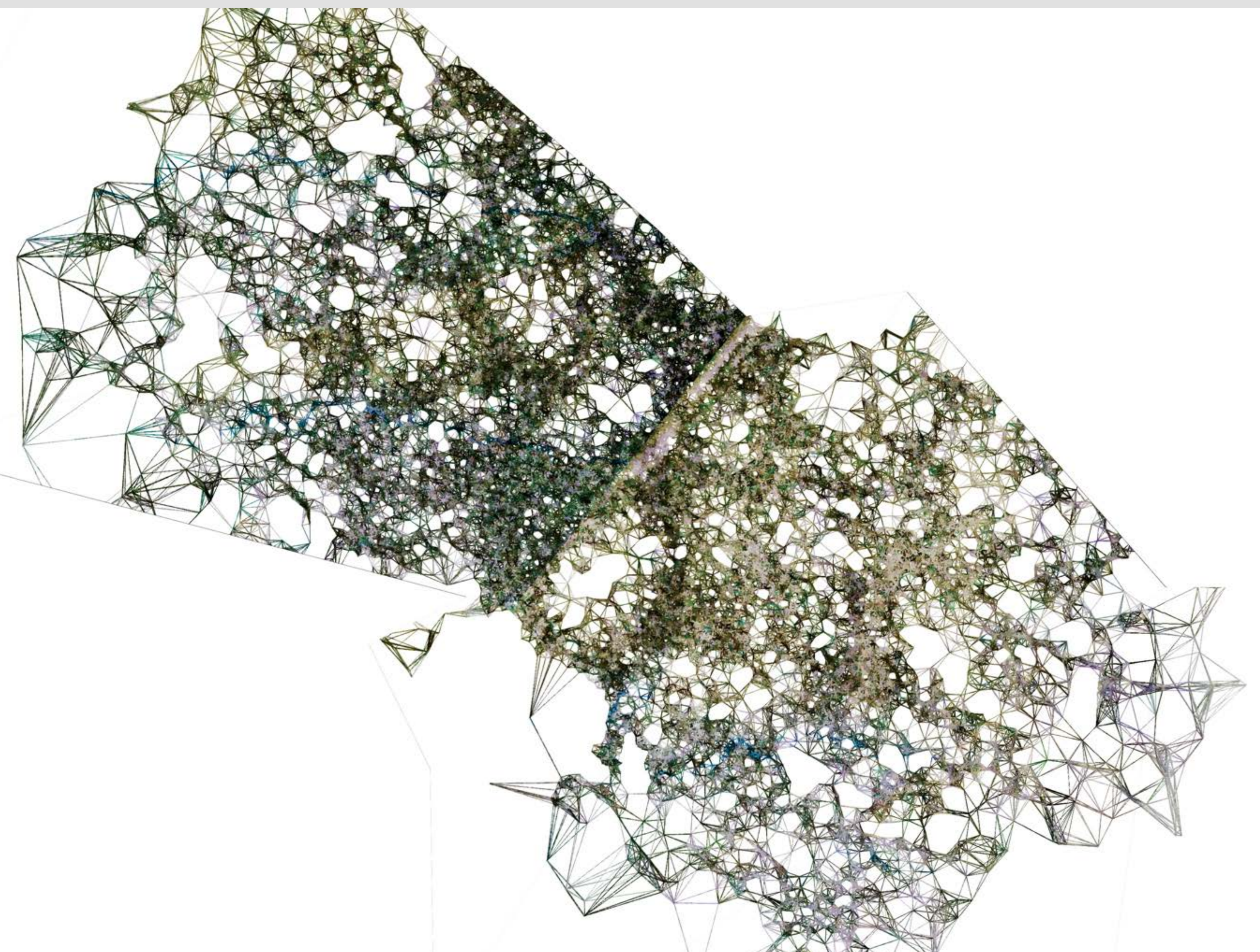
video material, 1274x1024, rgb



3D simulation, 1920x1080, rgba

Light Valve

client : personal project
yaer : 2014-2015
format : audiovisual installation
description : sound, visual and light installation for transparent display
contribution : concept, programming, visual, sound, hardware, wood work
web : dominofactory.net/works/light_valve_study_1.html



video material, 2857x2160, rgb



installation view, 1920x1081, rgba



3D simulation, 3334x1875, rgb



installation view, 640x360, rgb



3D simulation, 3334x1875, rgb



installation view, 640x360, rgb



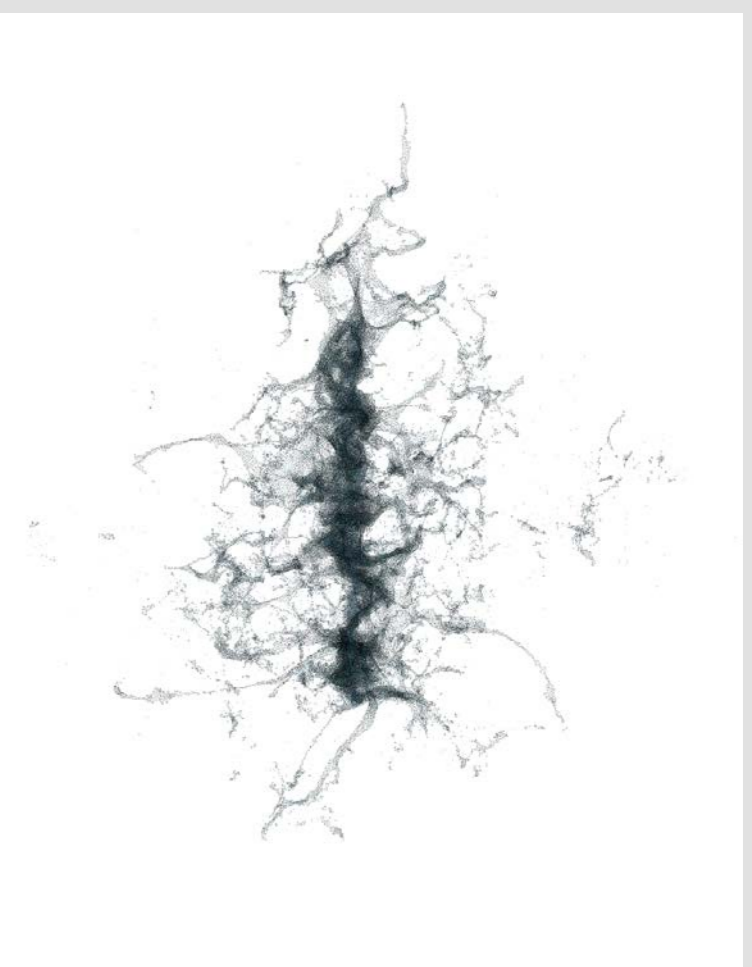
3D simulation, 3334x1875, rgb



venue, 4136x3132, rgb



video material, 565x685, rgba



video material, 1754x2256, rgb



video material, 694x1033, rgba



video material, 834x1202, rgba

34°55'11"S 138°35'53"E

client : Studio RYOICHI KUROKAWA
yaer : 2015
format : Site specific installation, 13ch HD video projection, 2ch sound 05'20"
description : 34°55'11"S 138°35'53"E is a projection mapping installation commissioned by Adelaide Festival.
contribution : video material, 3D simulation
web : www.ryoichikurokawa.com/project/3s1e.html



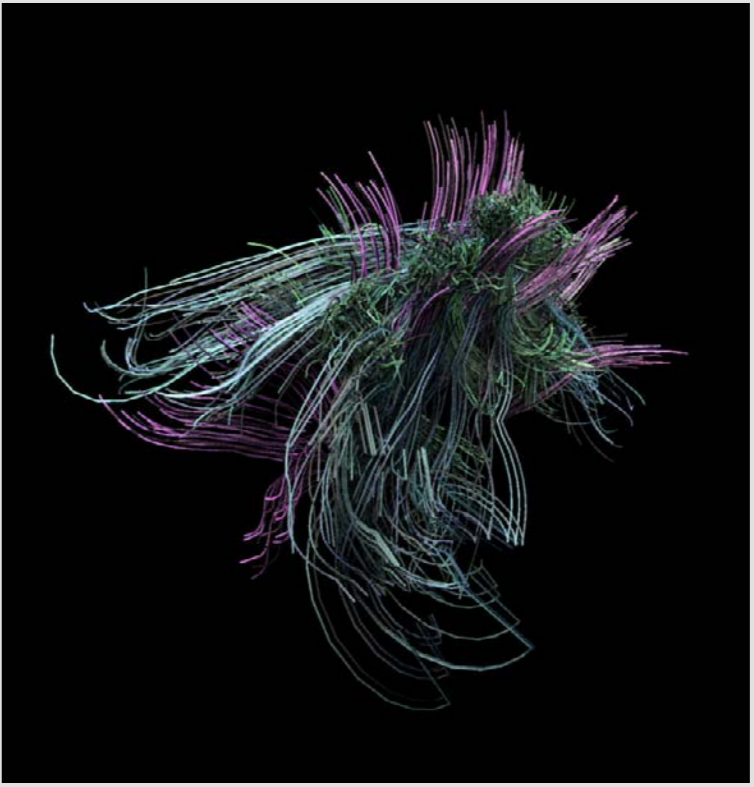
installation view, 2048x1360, rgb



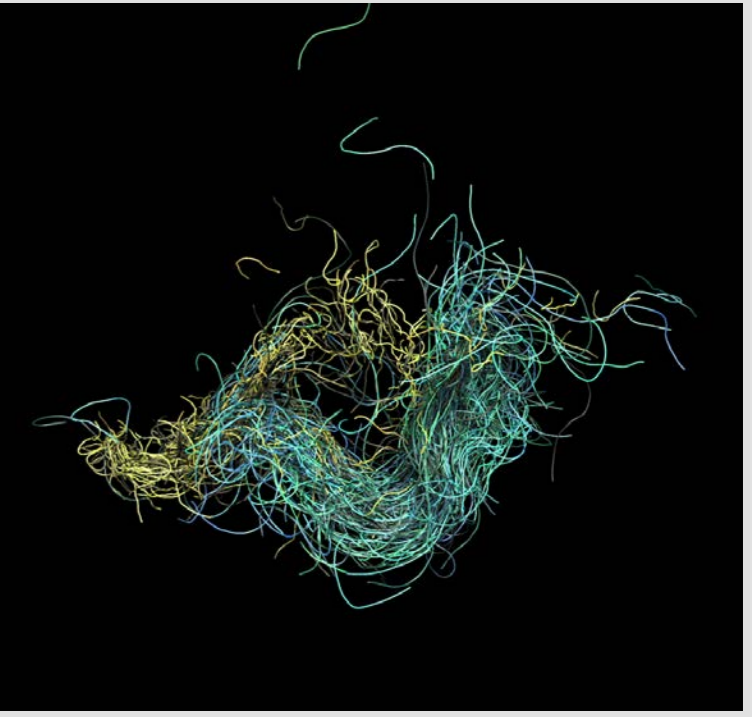
performance view, 1920x1080, rgb



video material, 1920x1080, rgb



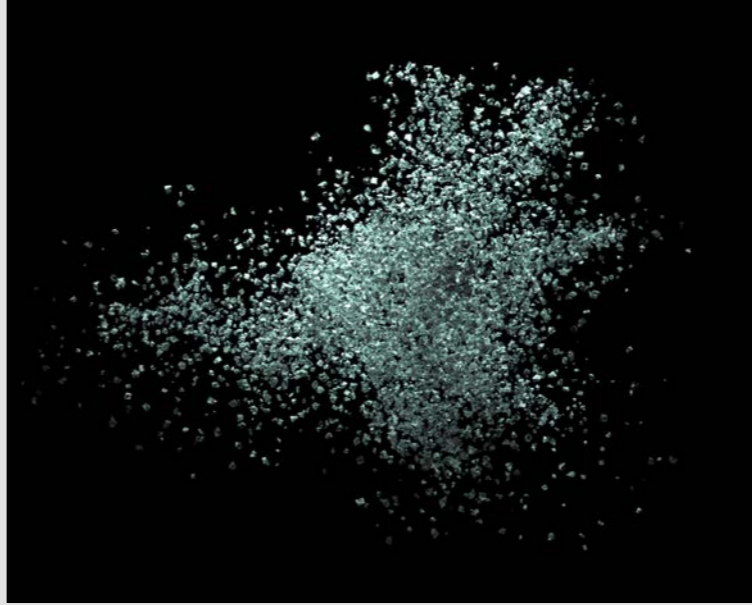
video material, 775x809, rgba



video material, 1089x1031, rgba



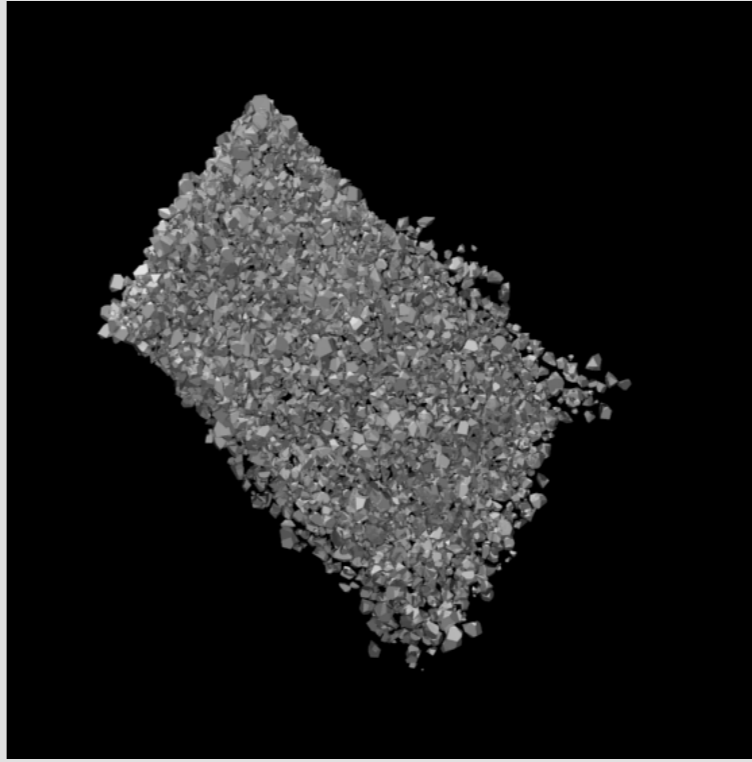
performance view, 1920x1080, rgb



video material, 1327x1075, rgba



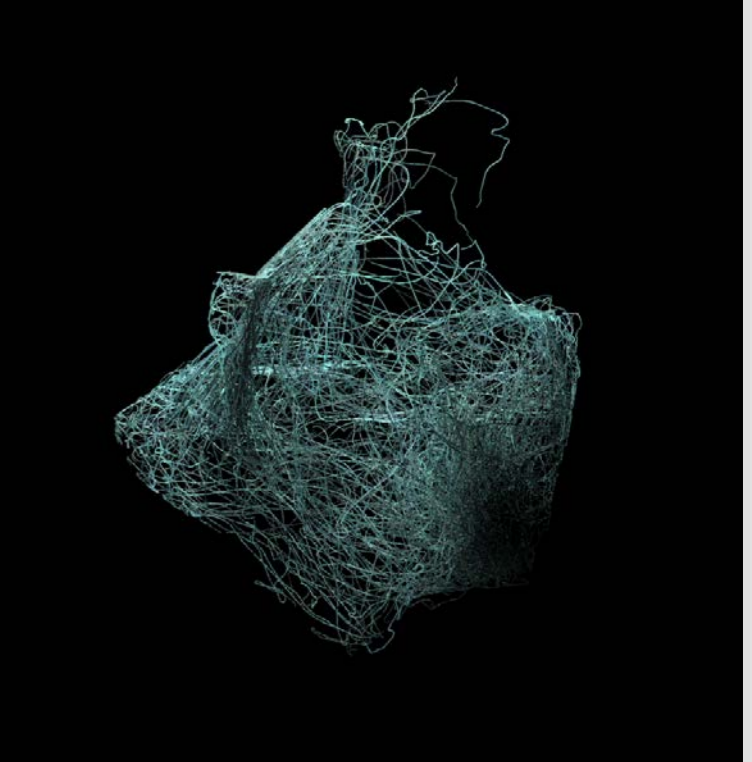
performance view, 640x377, rgb



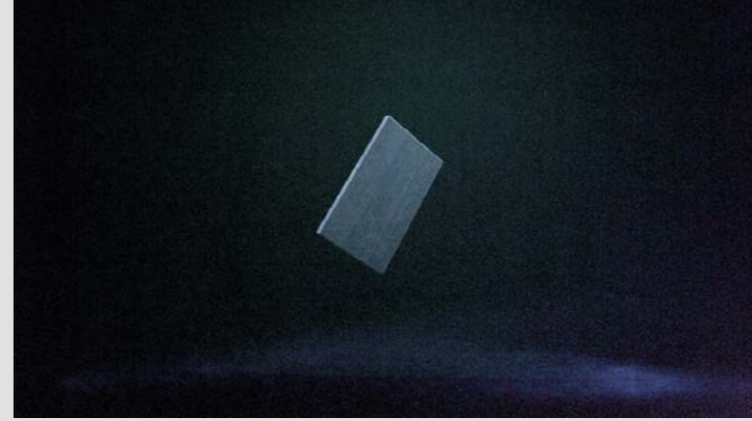
video material, 554x562, rgba



video material, 1158x1040, rgba



video material, 846x869, rgba



installation view, 640x360, rgb



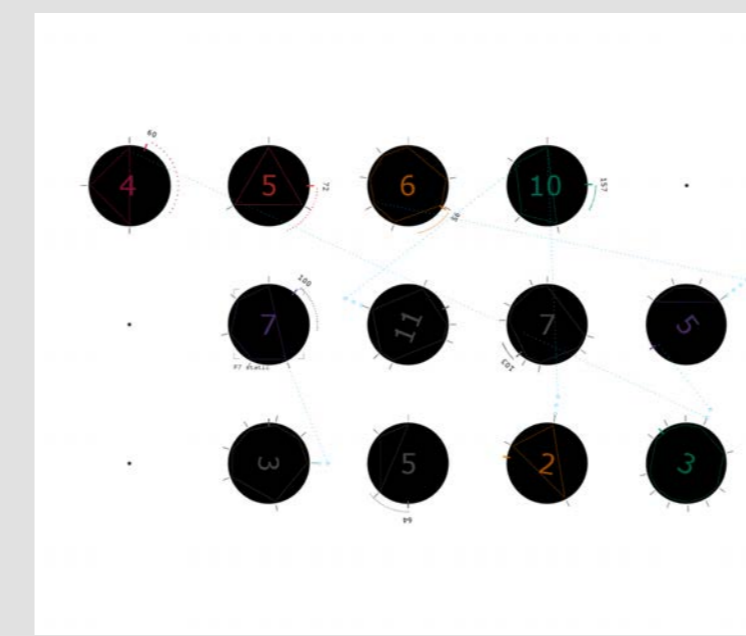
video material, 1055x712, rgba

mol

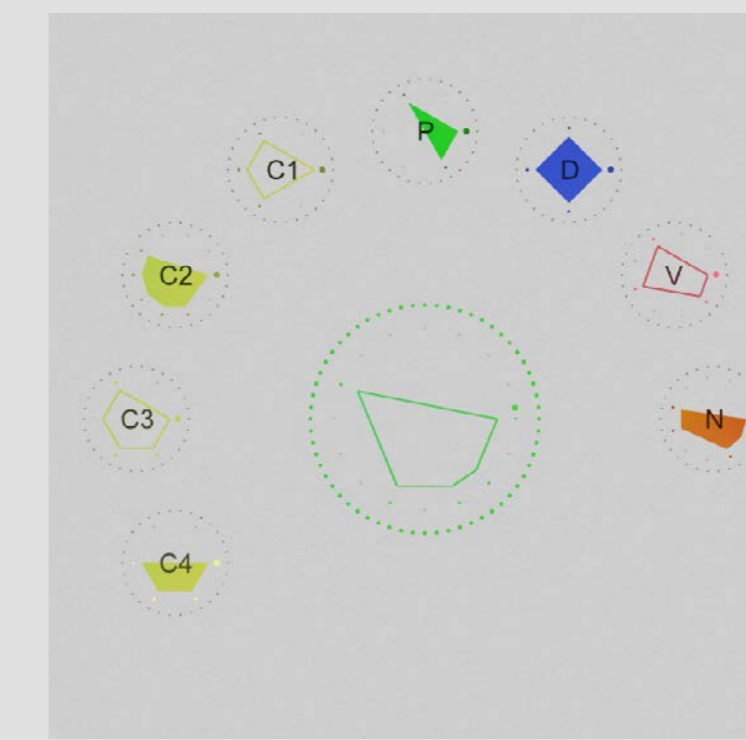
client : Studio RYOICHI KUROKAWA
yaer : 2012
format : Audiovisual installation/Audiovisual concert
description : mol is a audiovisual art piece for 2ch holographic screen.
contribution : video material
web : www.ryoichikurokawa.com/project/mol.html



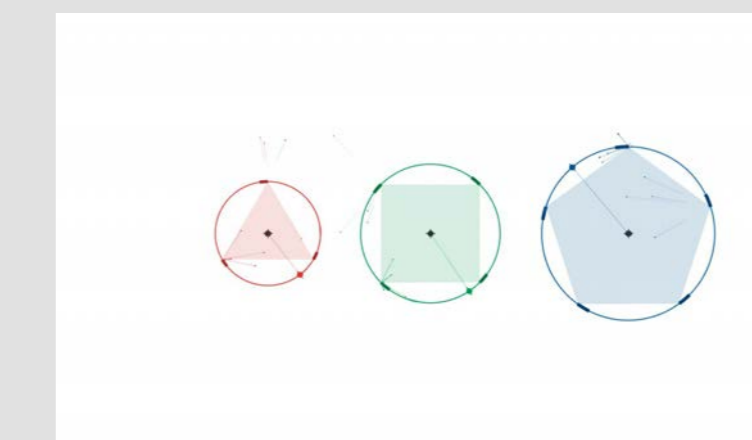
performance, 4328x3256, rgba



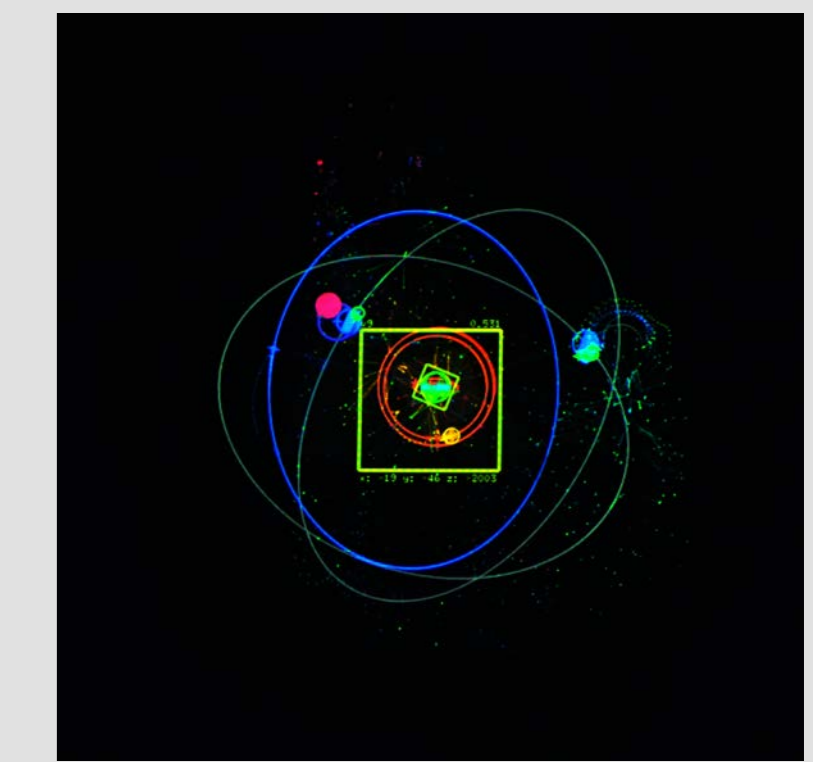
application window, 1500x1252, rgb



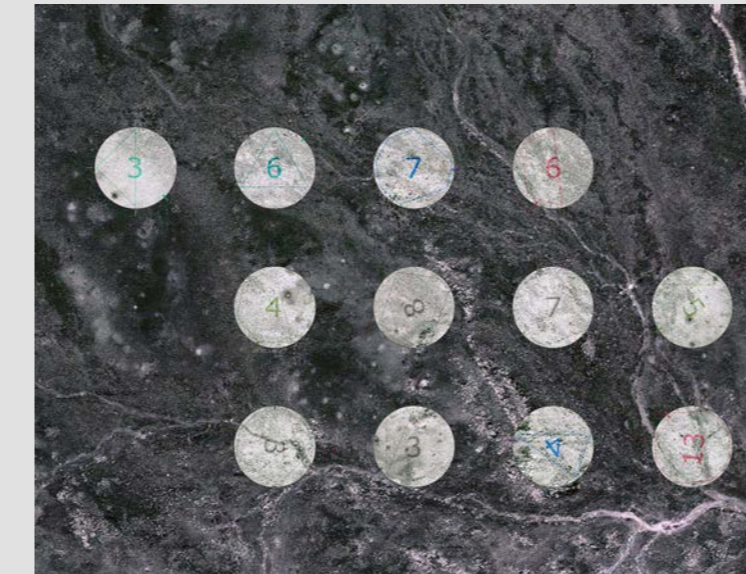
application window, 720x700, rgba



application window, 1679x965, rgb



application window, 1400x1400, rgb



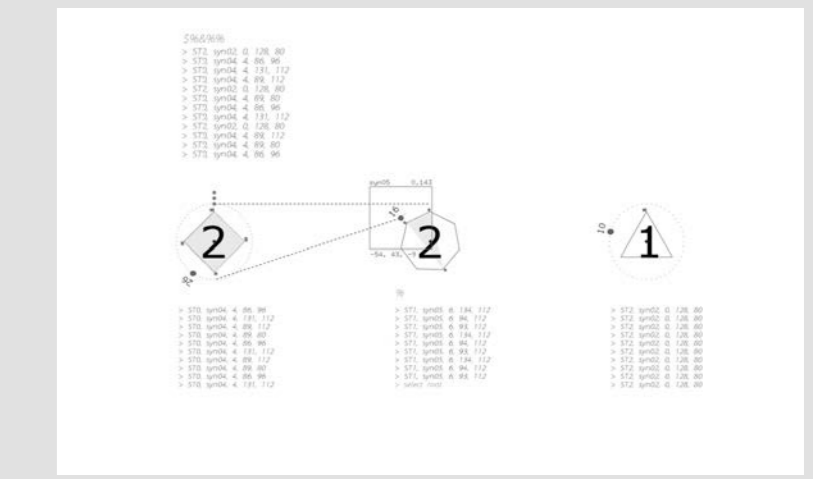
application window, 1500x1147, rgb



application window, 1400x890, rgba



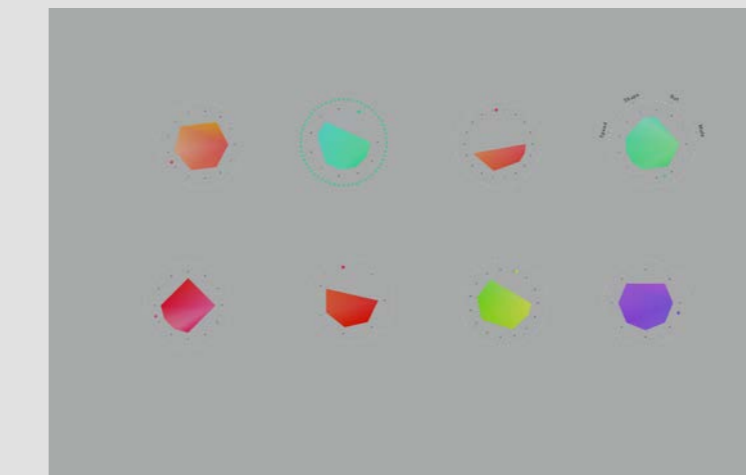
application window, 1280x720, rgba



application window, 2880x1800, rgb



application window, 1500x1147, rgb



application window, 1400x890, rgba



application window, 550x300, rgb

dial

client : personal project

yaer : 2012 -

format : OSX application, Performance

description : Research and performance project for complex rhythm composition by circular notation system.

contribution : concept, programming, visual, sound

web : dominofactory.net/works/dial_2013_update.html



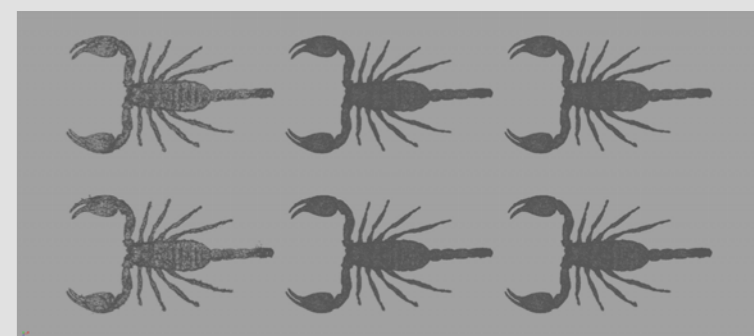
sculpture, 640x427, rgb



3D simulation, 1947x1566, rgb



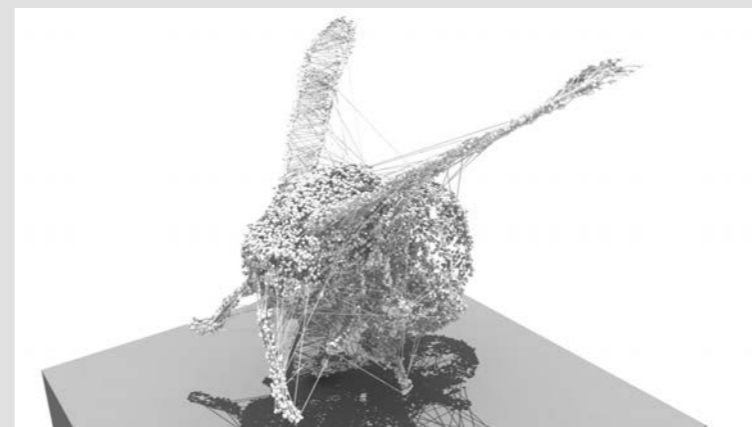
production process, 2000x1000, rgb



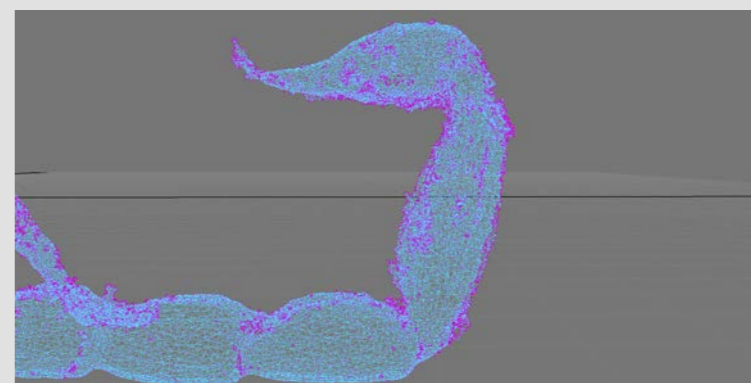
scann data, 2509x1109, rgba



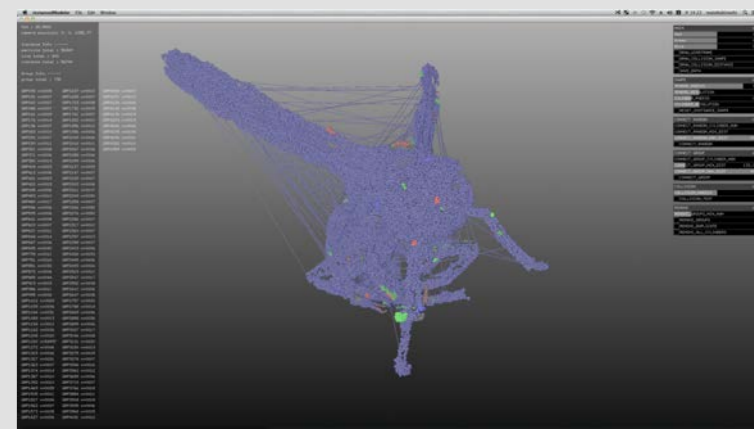
sculpture, 640x427, rgb



3D simulation, 1920x1080, rgb



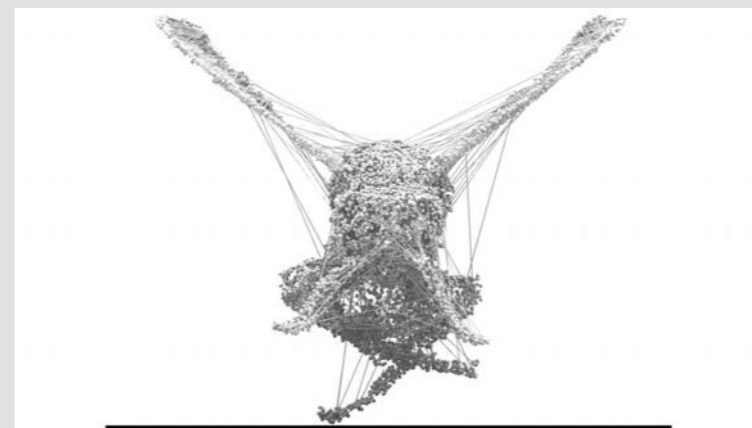
production process, 2000x1000, rgba



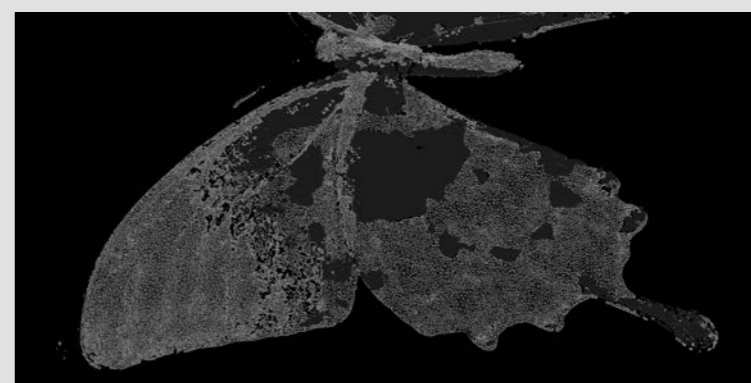
custom application, 2560x1440, rgb



sculpture, 640x404, rgb



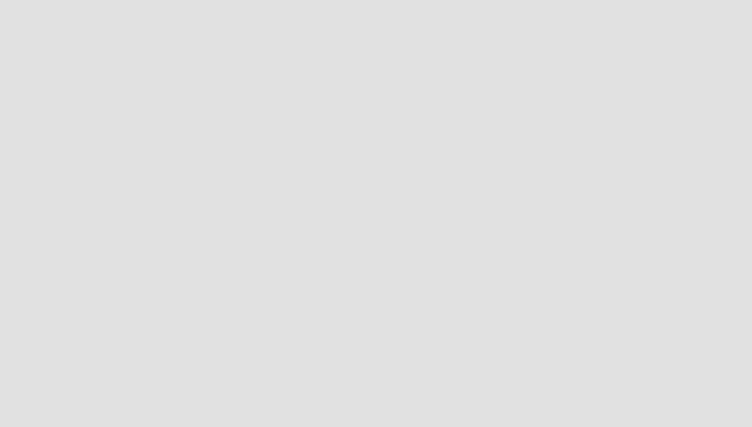
3D simulation, 1920x1080, rgb



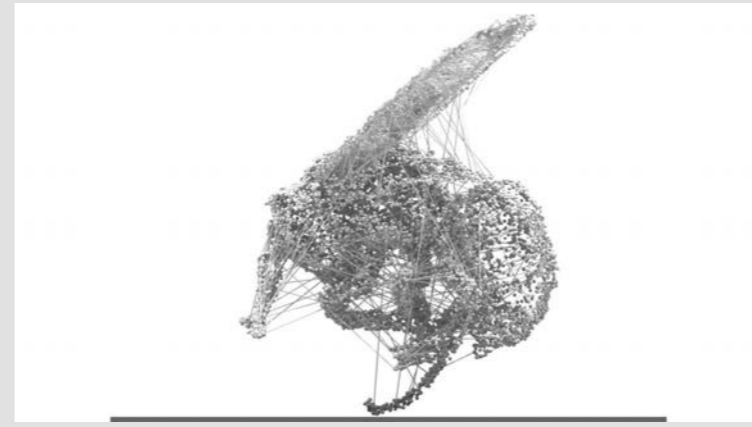
production process, 2560x1300, rgba



3D scan, 4416x3312, rgb



sculpture, 640x404, rgb



3D simulation, 1920x1080, rgb



scann data, 2510x1110, rgba

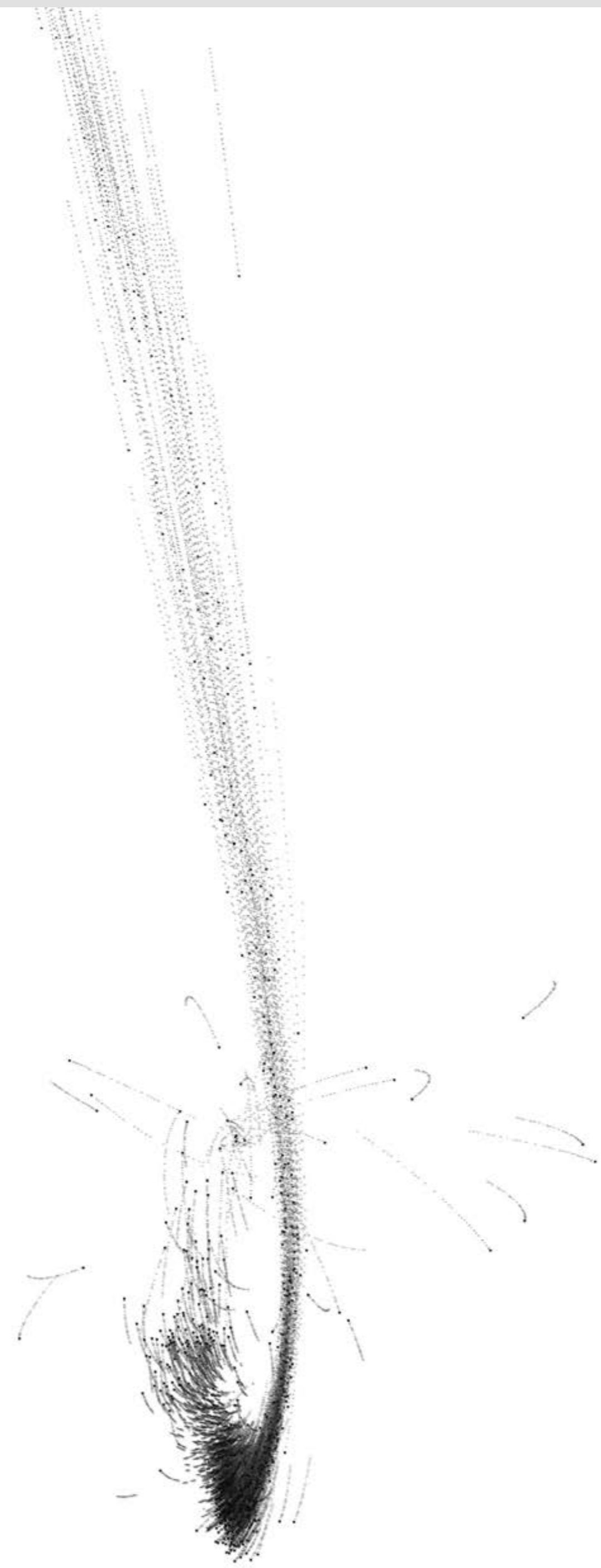


scann data, 2509x1112, rgba

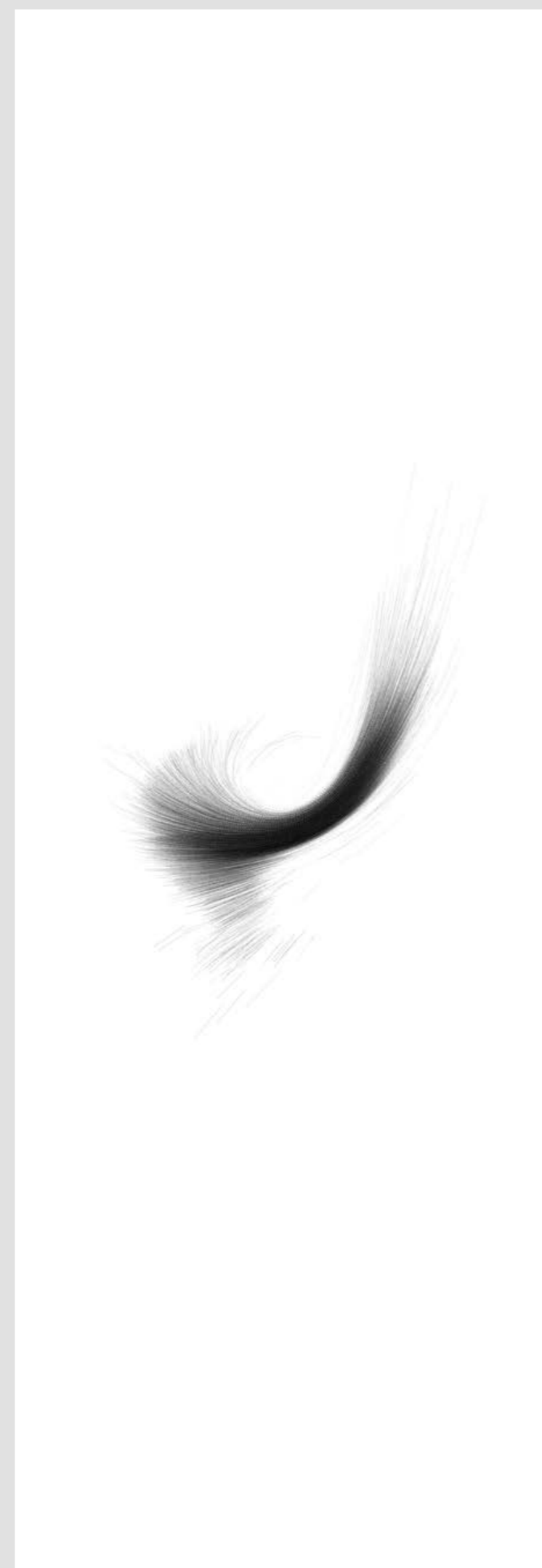
renature

client : Studio RYOICHI KUROKAWA
yaer : 2014
format : sculpture
description : renature is a series of 3D printing sculpture.
contribution : 3D modeling, custom software
web : www.ryoichikurokawa.com/project/renature.html

3D simulation, 1947x1737, rgb



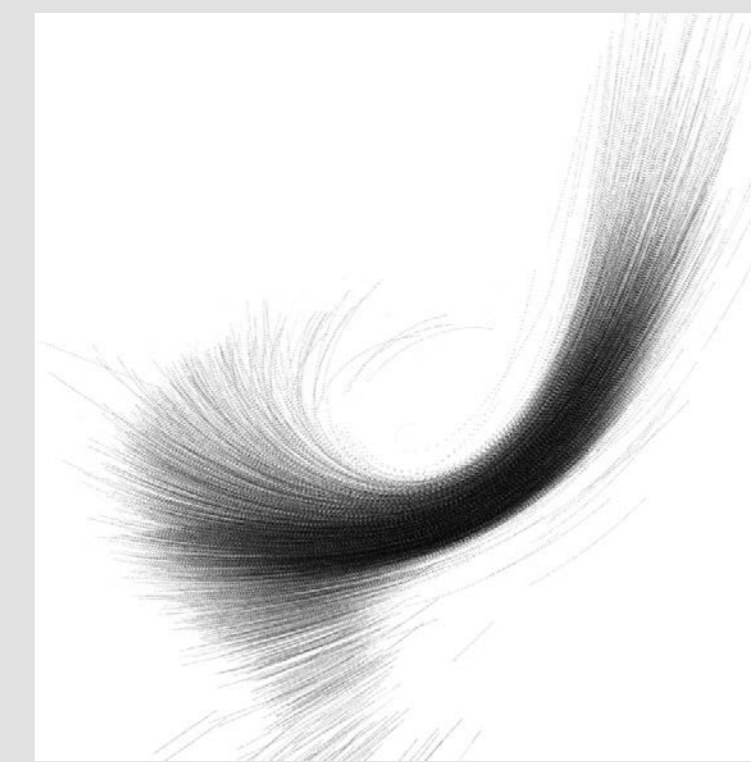
version 1, 3151x3150, rgb



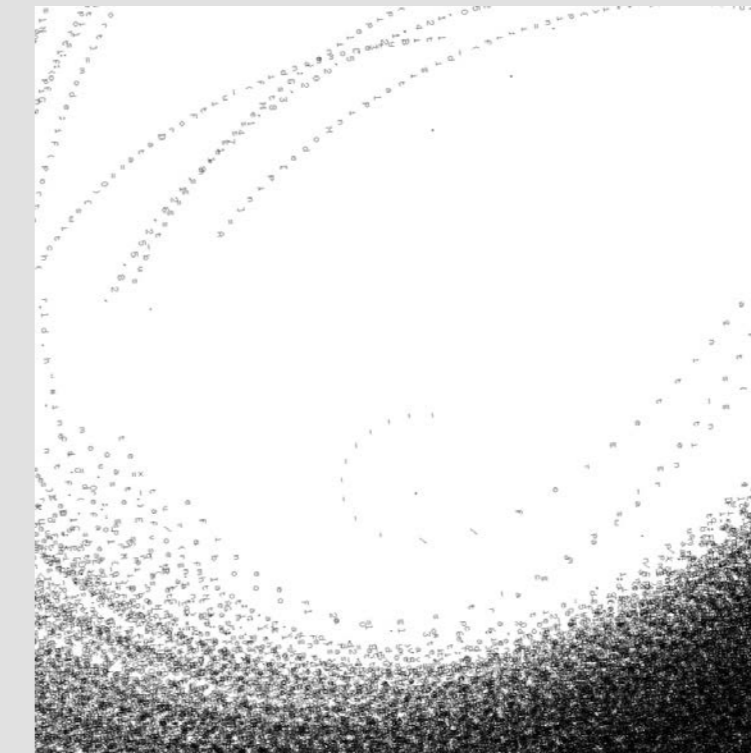
version 2, 1600x4600, rgb



version 3, 1600x4600, rgb



version 2, zoom, 867x867, rgb



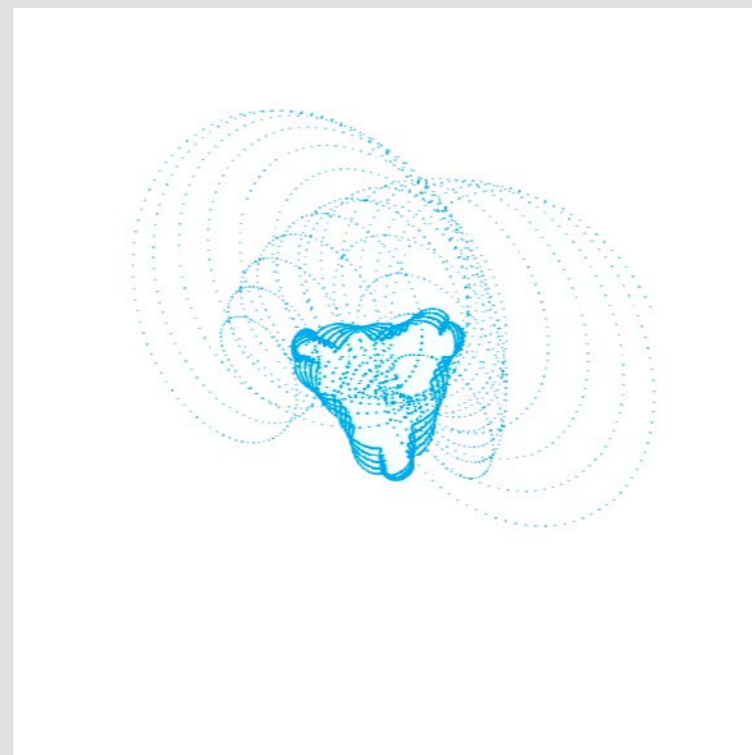
version 2, zoom, 1003x1003, rgb

dial_static

client : personal project
yaer : 2013
format : still image
description : Calligraphy with 3D Physics Simulation
contribution : programming
web : http://dominofactory.net/works/dial_static.html

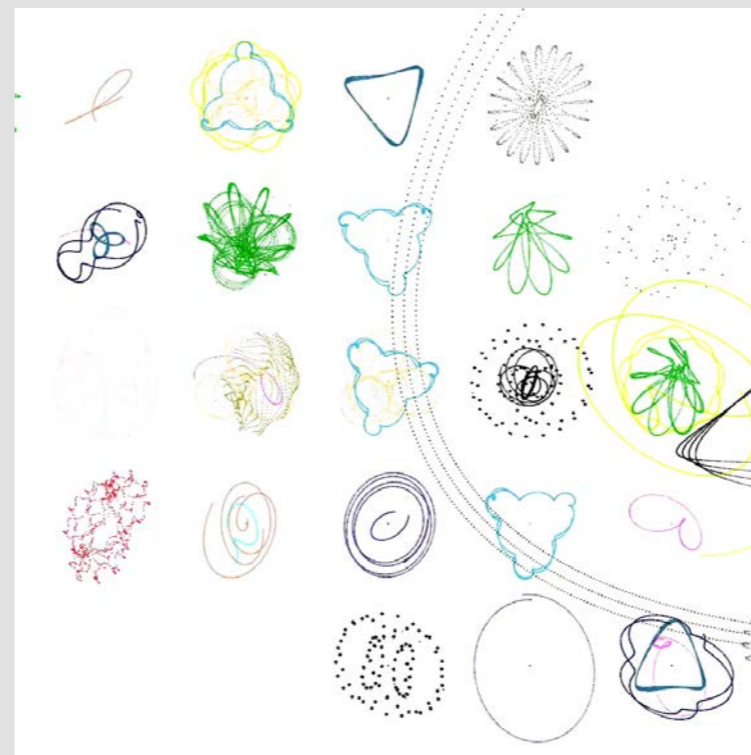


spiro composition 1, zoom view, 676x676, rgb



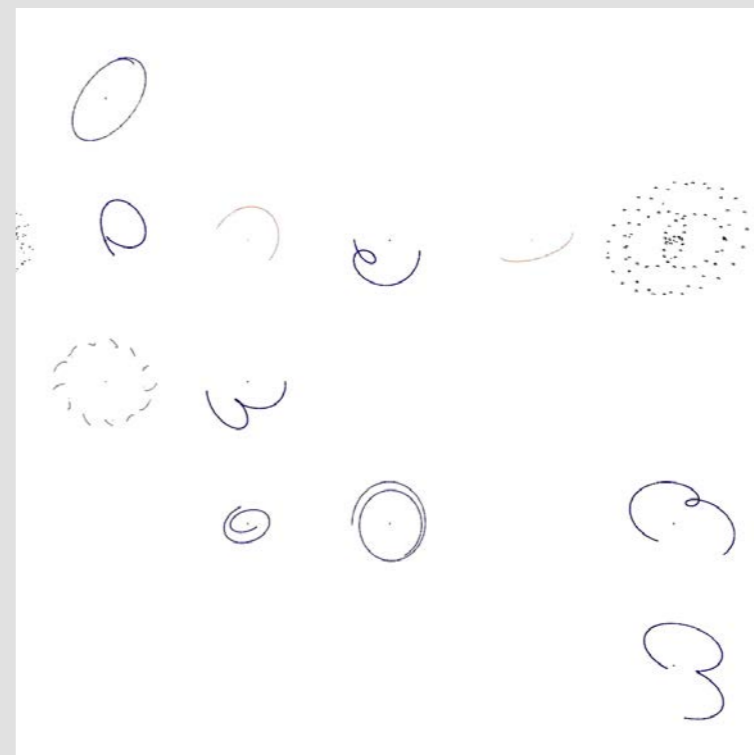
spiro composition 3, zoom view, 599x599, rgba

spiro composition 3, zoom view, 698x698, rgb



spiro composition 2, zoom view, 1080x1080, rgb

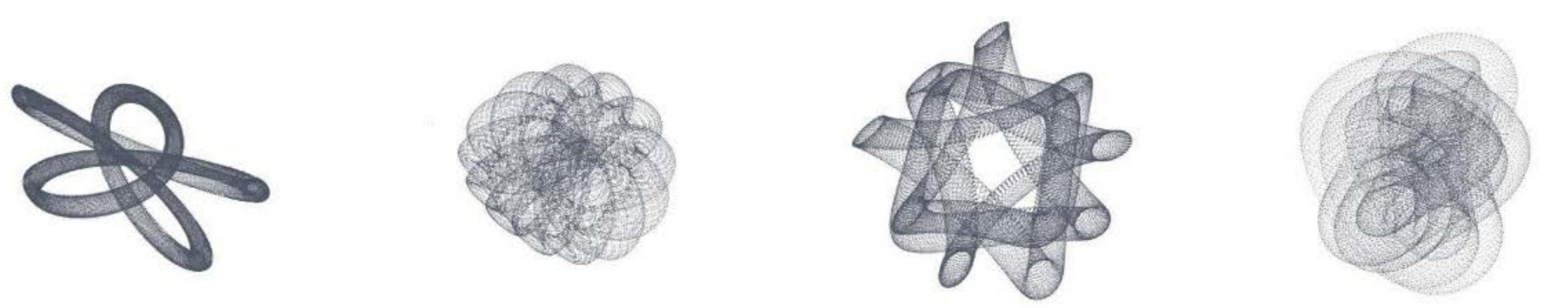
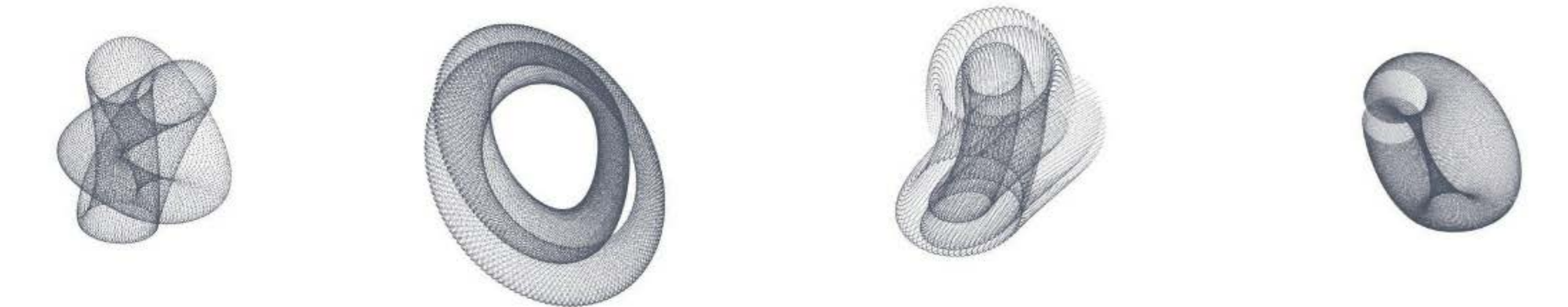
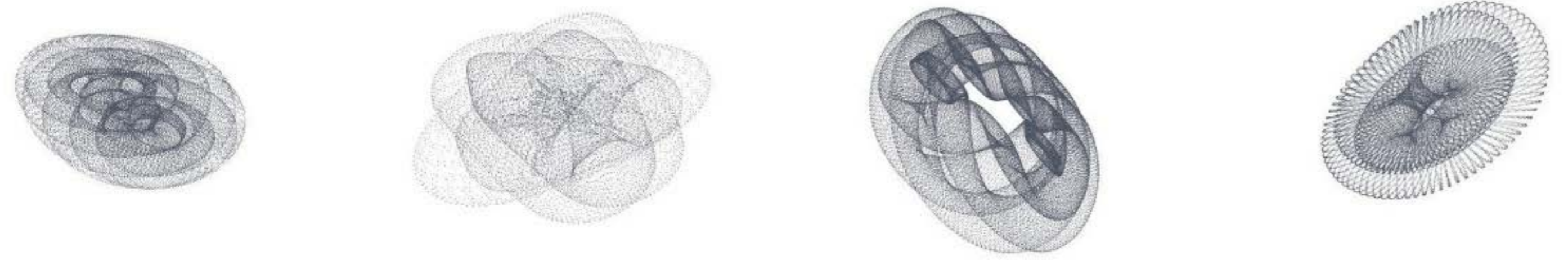
spiro composition 2, zoom view, 1080x1080, rgb



spiro composition 2, zoom view, 1080x1080, rgb

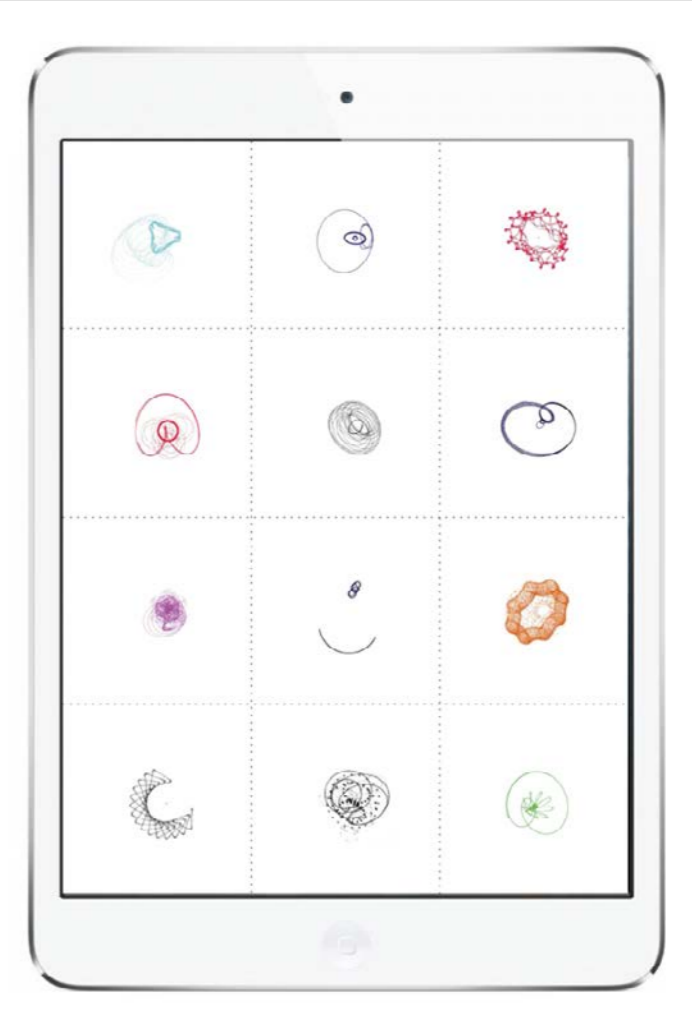


spiro iOS version, 650x900, rgb



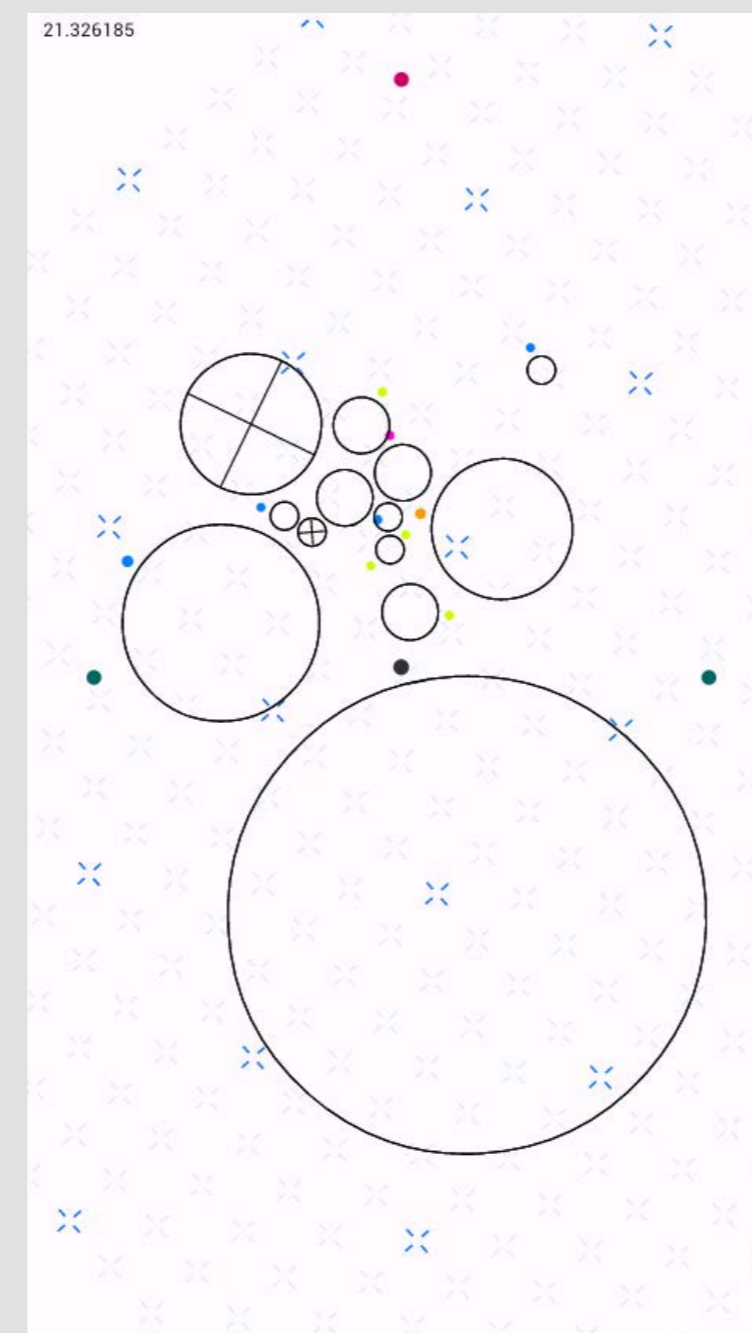
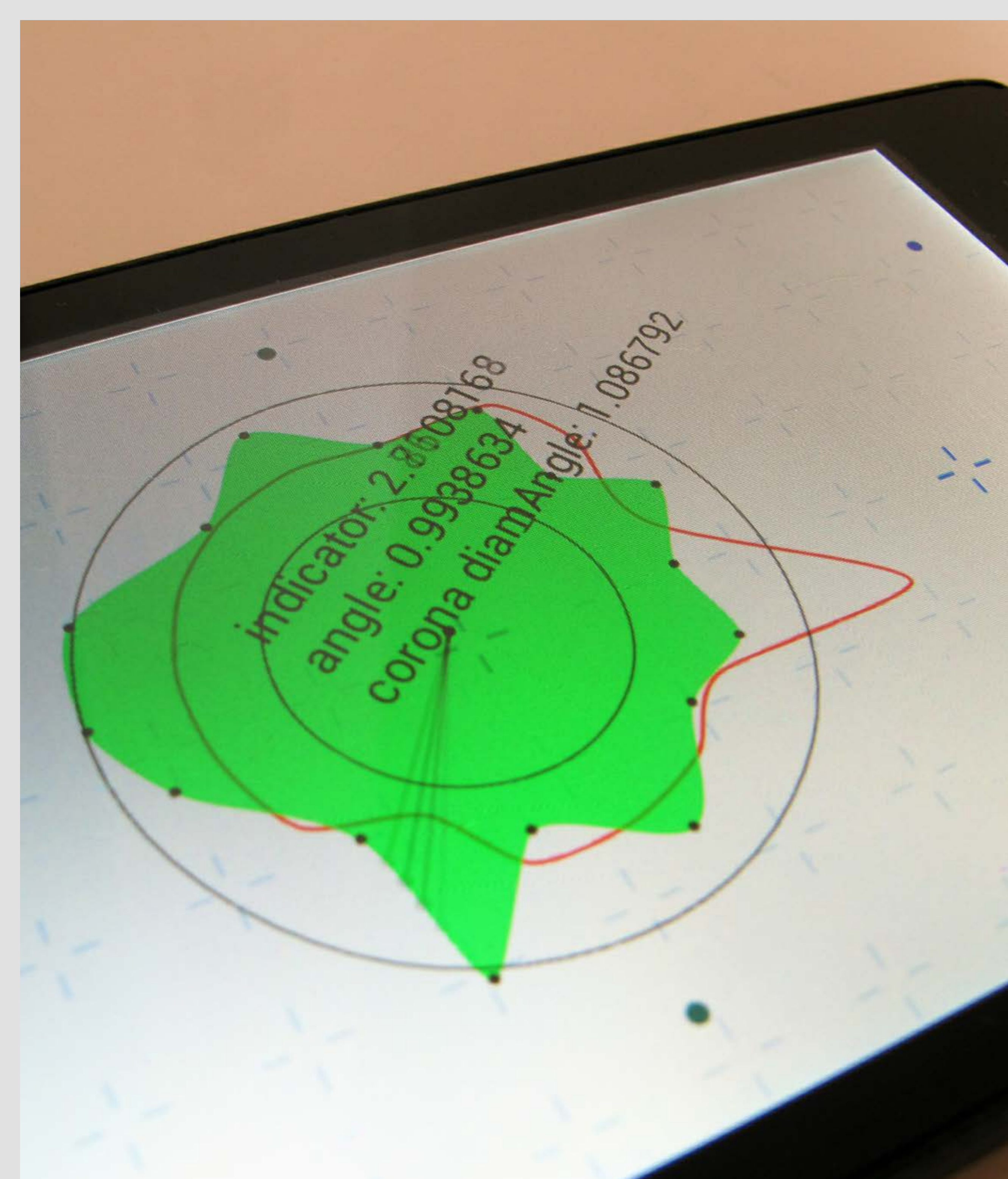
spiro

client : personal project
yaer : 2014
format : audiovisual
description : spiro is a series of audiovisual piece composed by custom rhythm app.
contribution : concept, programming, visual, sound
web : http://dominofactory.net/works/spiro_composition.html

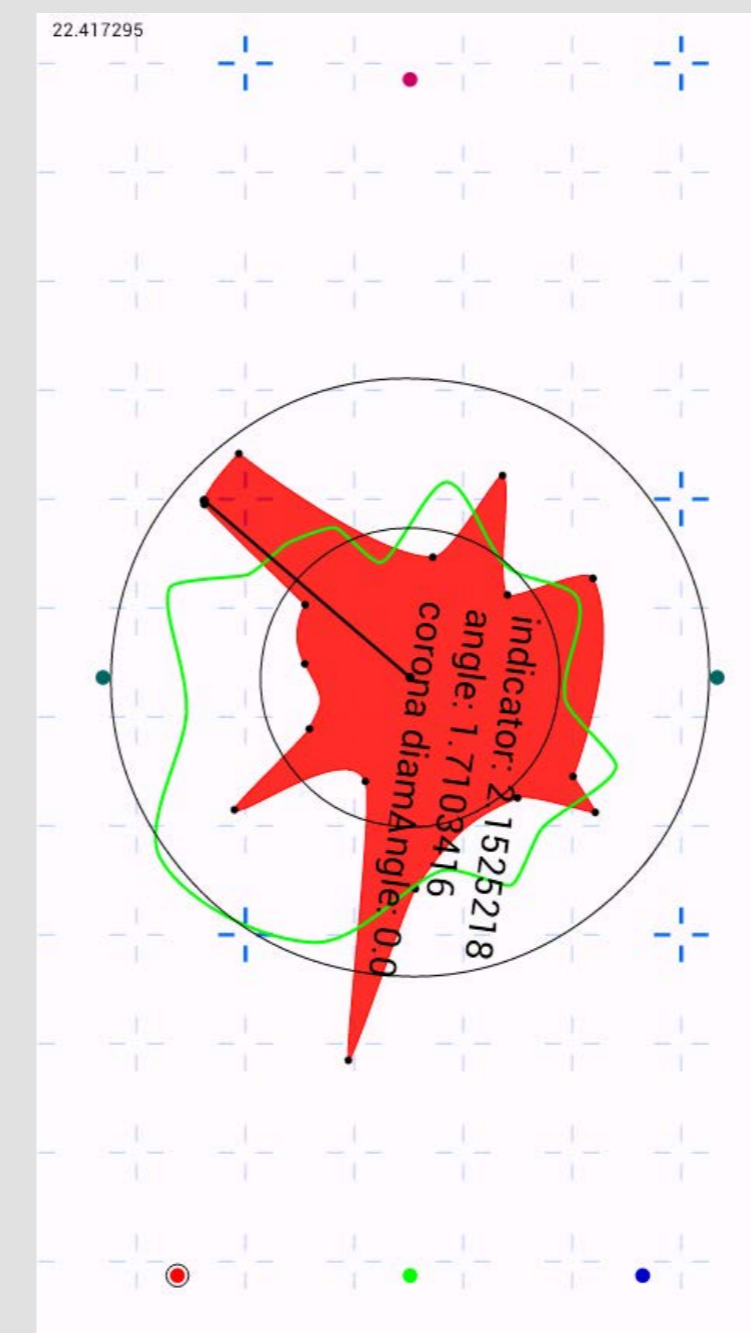


spiro iOS version, 650x900, rgb

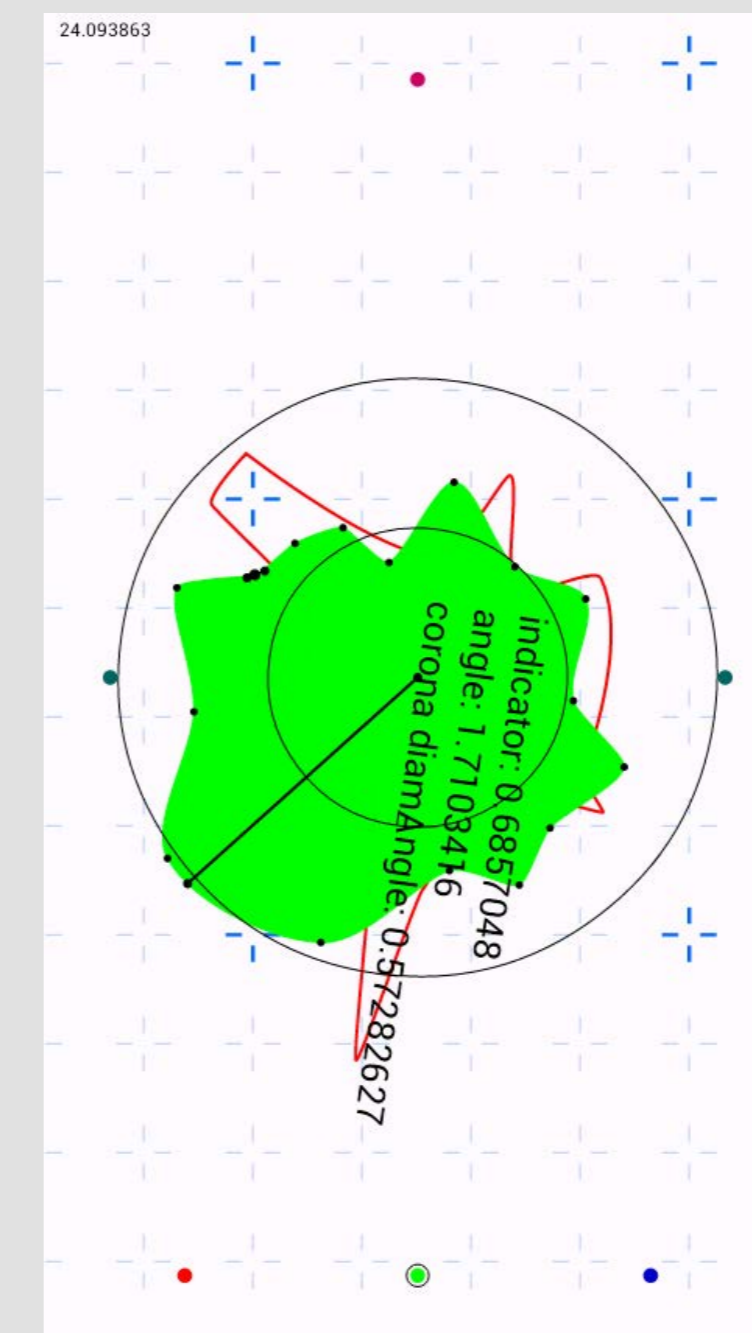
spiro original version, 1251x1251, rgb



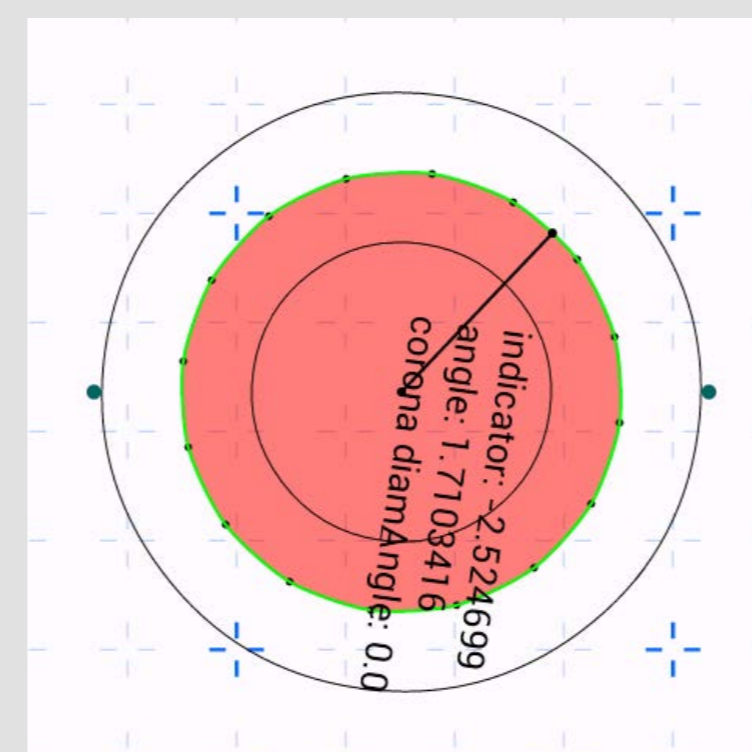
song dimension, 480x854, rgb



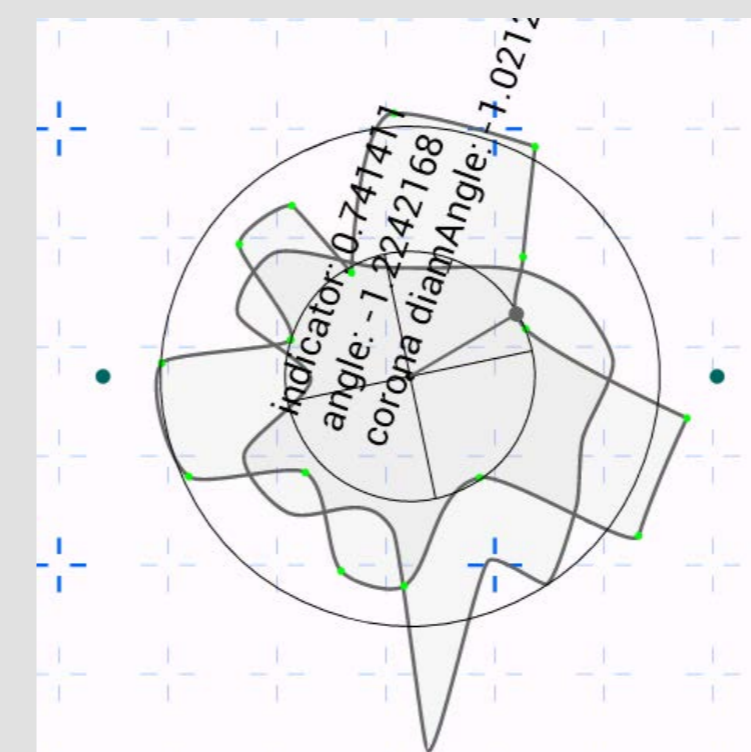
loop dimension, 480x854, rgb



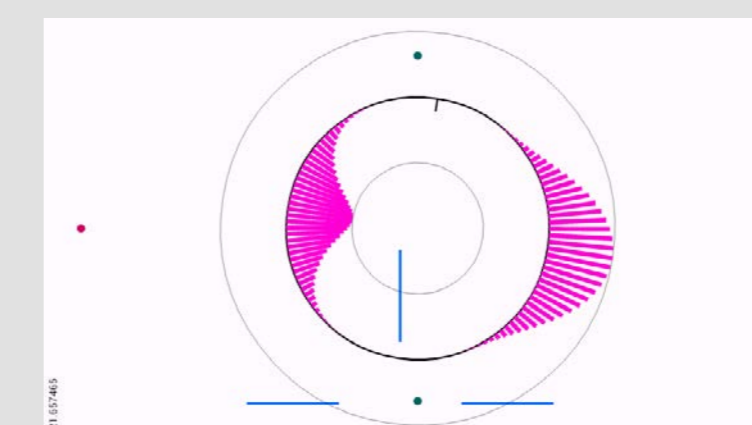
loop dimension, 480x854, rgb



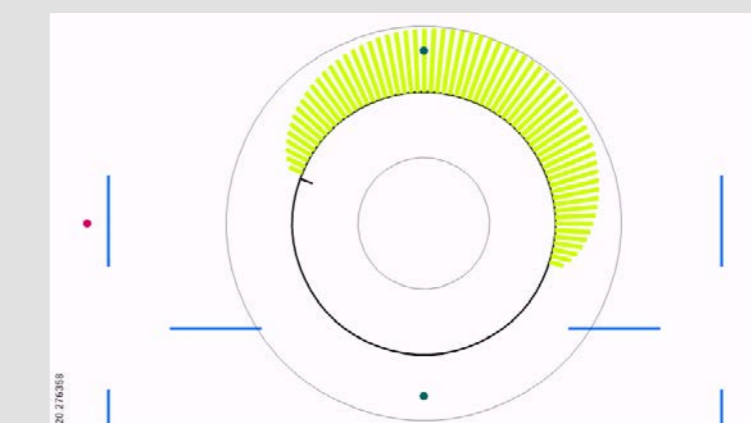
loop dimension, 480x480, rgb



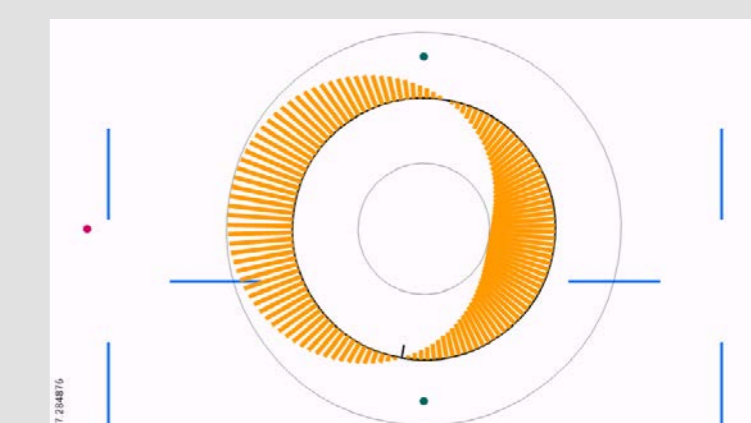
loop dimension, mute, 480x480, rgb



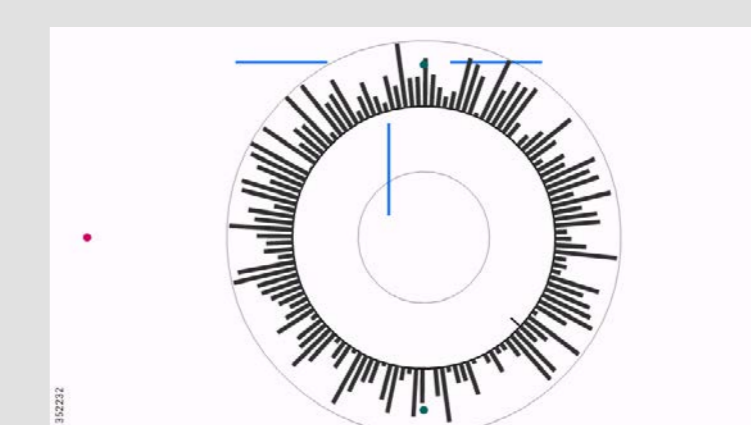
tone dimension, sine, 854x480, rgba



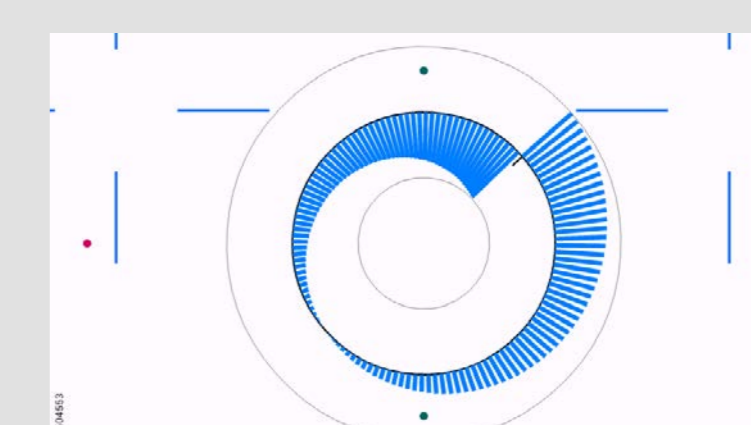
tone dimension, 854x480, rgba



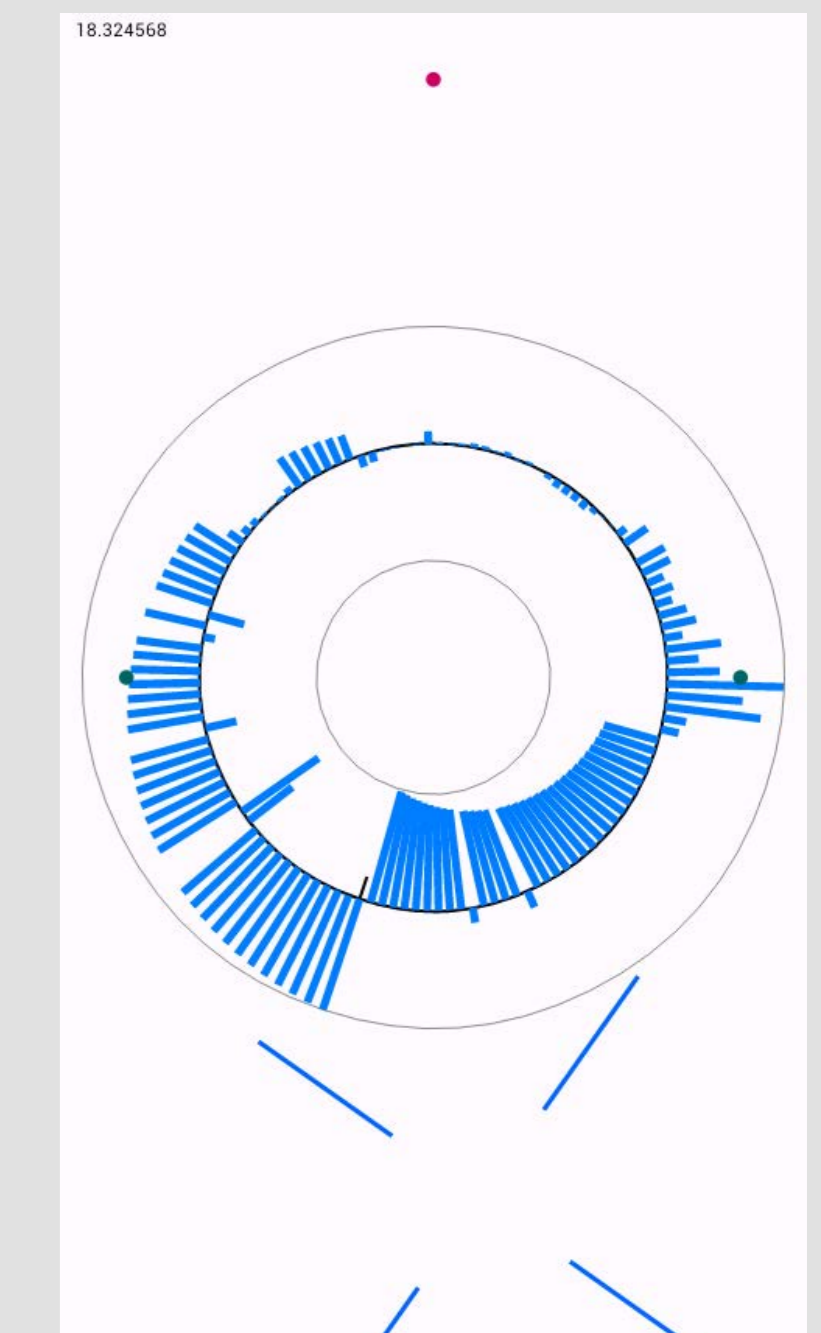
tone dimension, triangle, 854x480, rgba



tone dimension, noise, 854x480, rgba



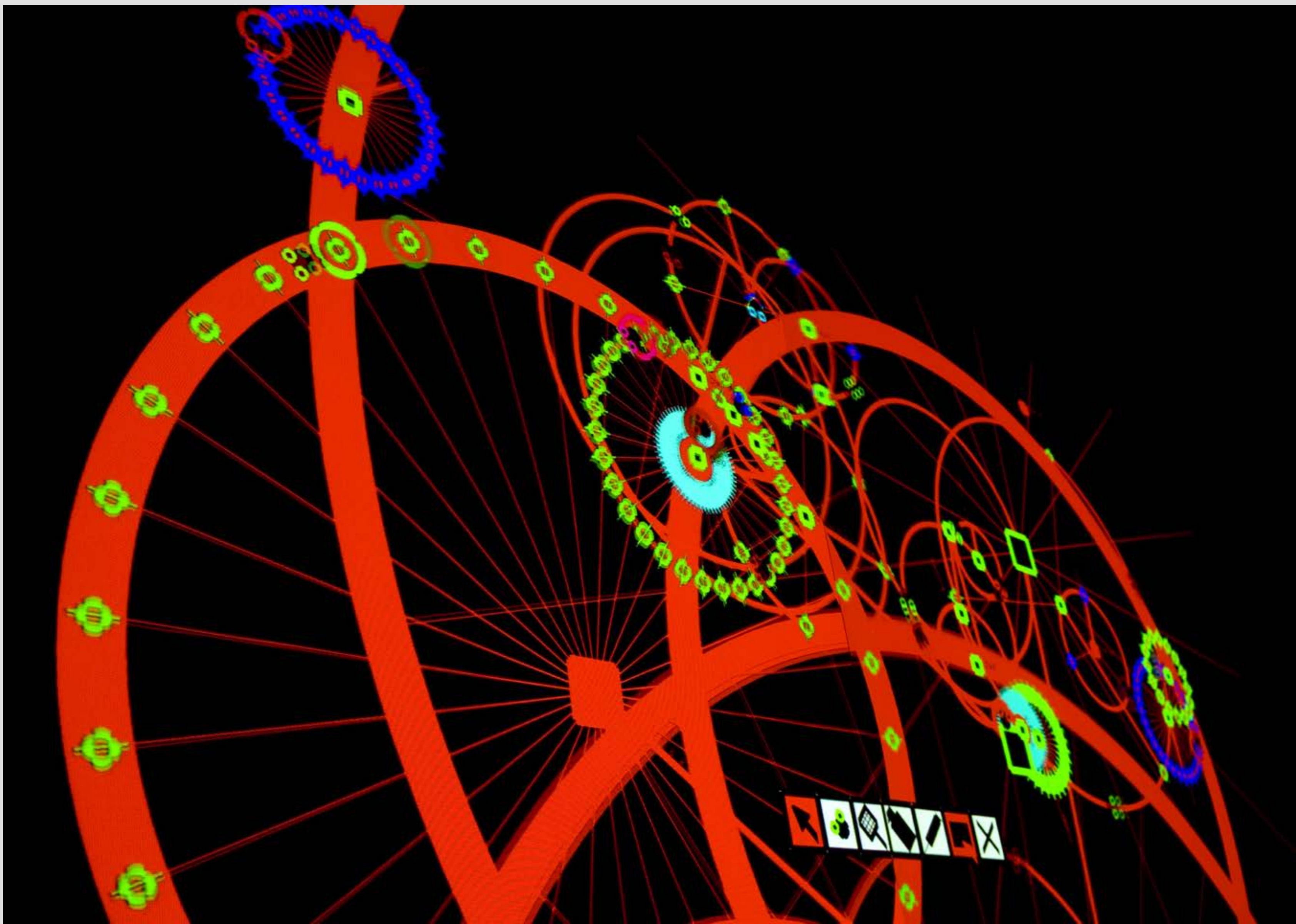
tone dimension, saw, 854x480, rgba



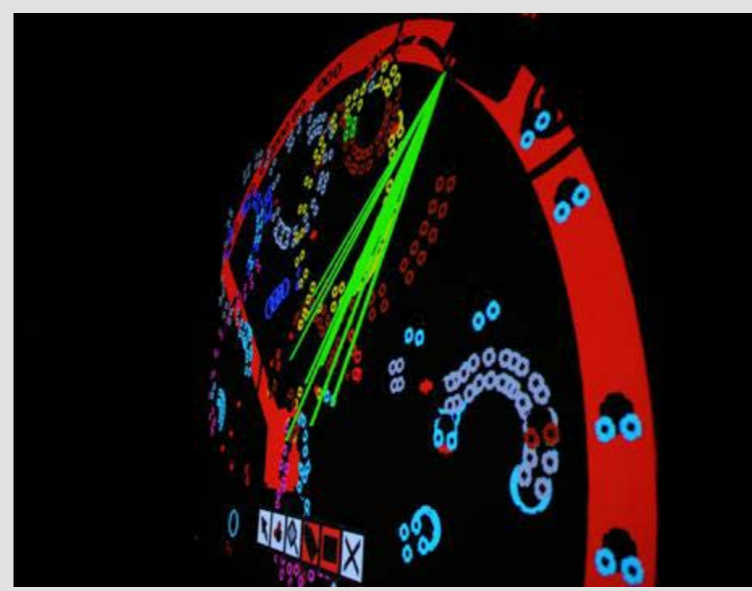
tone dimension, saw user edit, 480x854, rgb

TORUKU

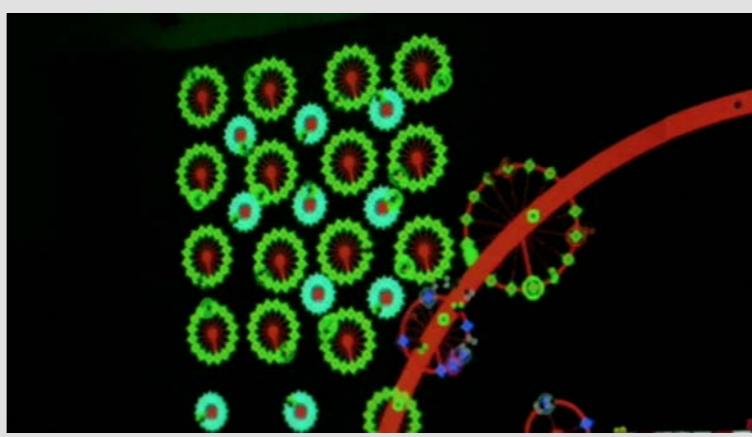
client : Hiroshi Matoba + Florian Meyer
 year : 2013
 format : Android Music App
 description : TORUKU is a music synthesizer with circular movement.
 contribution : concept, programming, visual, sound
 web : <http://dominofactory.net/works/TORUKU.html>



performance, 2952x2100, rgb



performance, 462x356, rgb



performance, 1280x720, rgba



performance, 2842x2842, rgb



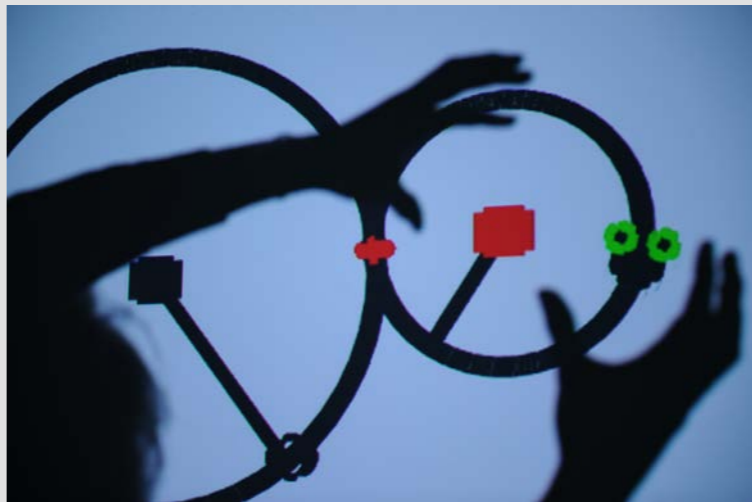
logo, 800x600, rgb



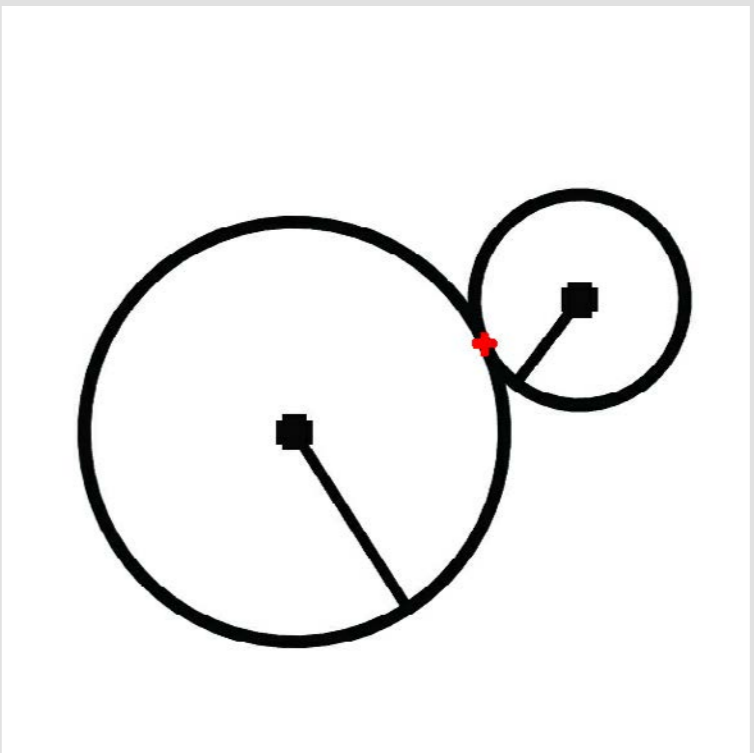
performance, 4256x2832, rgb



performance, 664x369, rgb



performance, 4256x2832, rgb



application window, 611x611, rgb



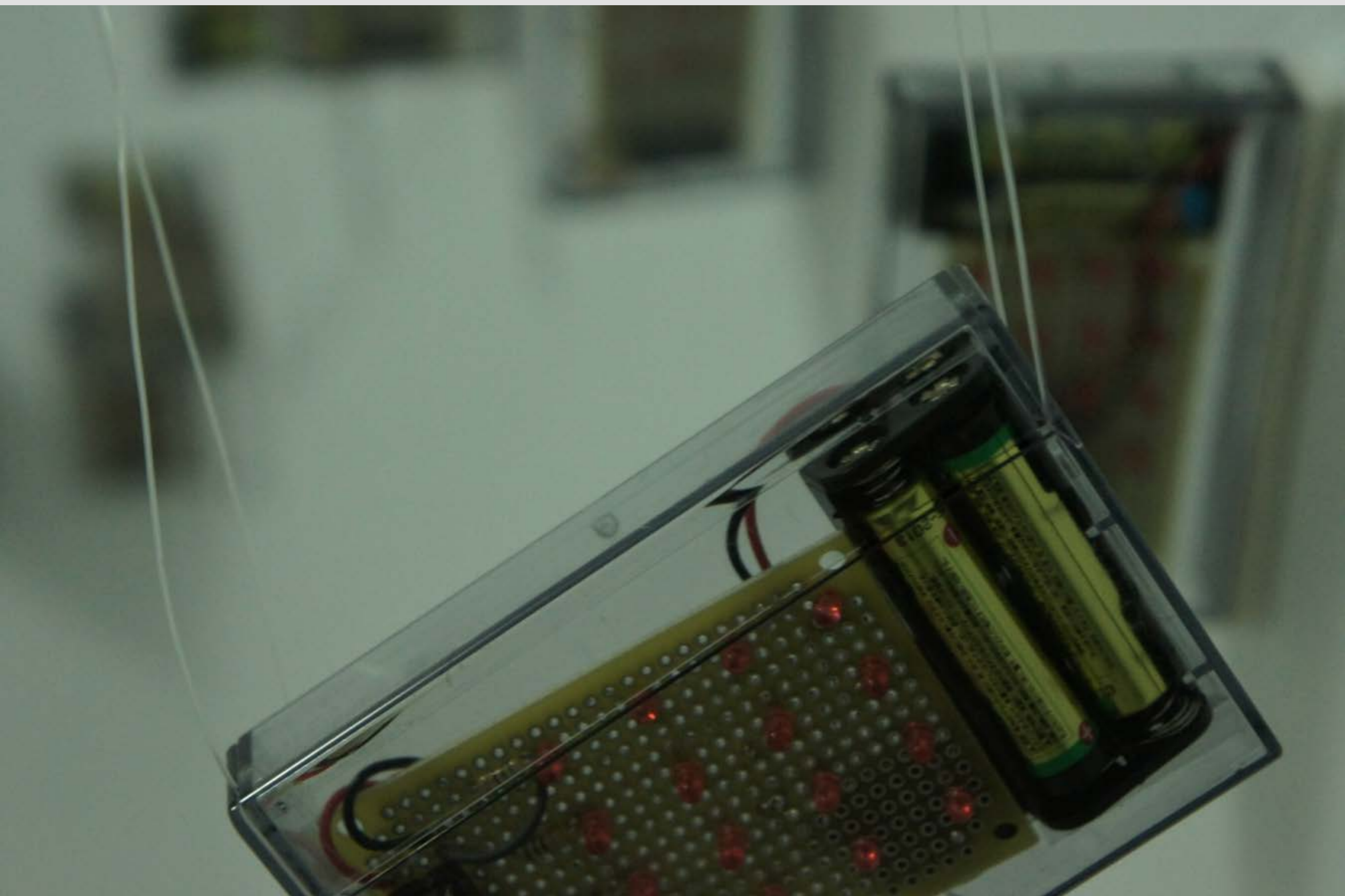
performance, 1200x800, rgb



tool bar, 797x192, rgba

Overbug

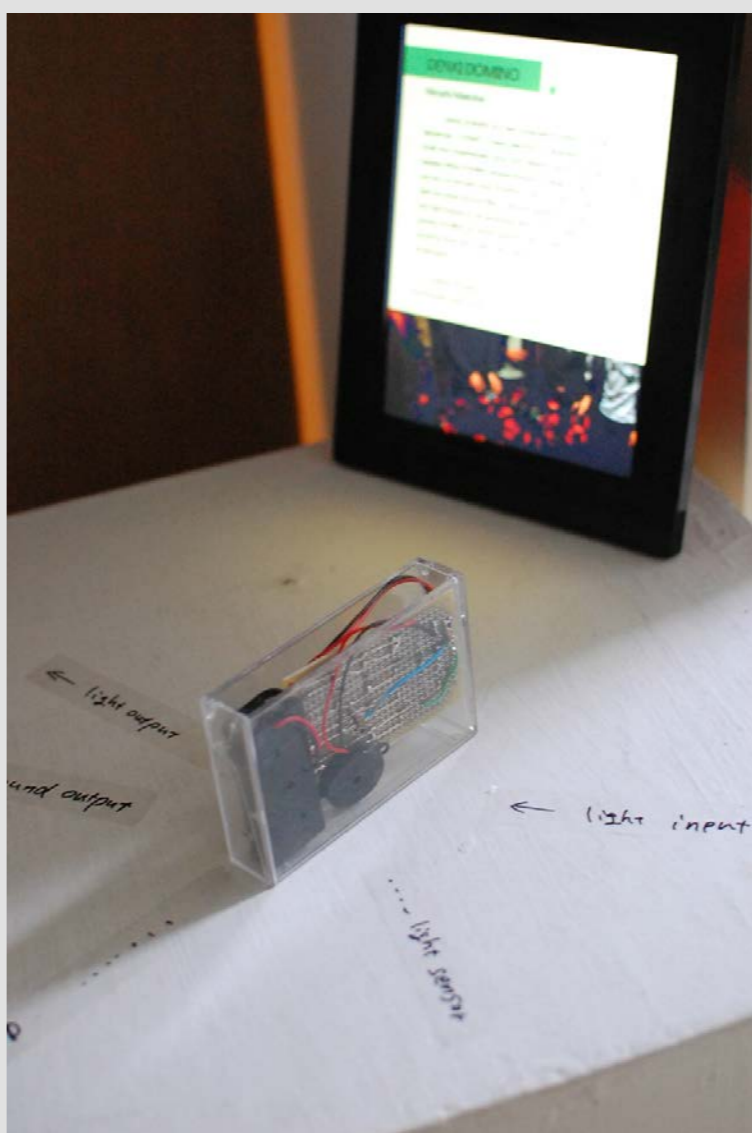
client : personal project
yaer : 2008
format : Java Application, Performance
description : Overbug is a music-performance tool designed to compose Minimal and Dance Music. Through looping and newly arranging sound patterns, the program creates complex, polyrhythmic sounds.
contribution : concept, programming, visual, sound
web : dominofactory.net/works/Overbug.html



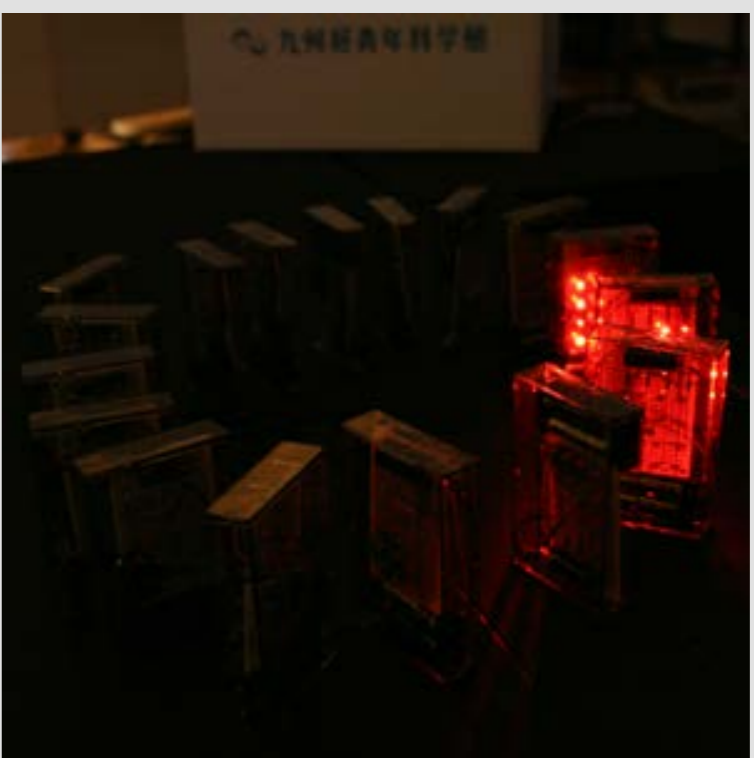
installation view, 3344x2224, rgb



installation view, 3344x2224, rgb



installation view, 1496x2256, rgb



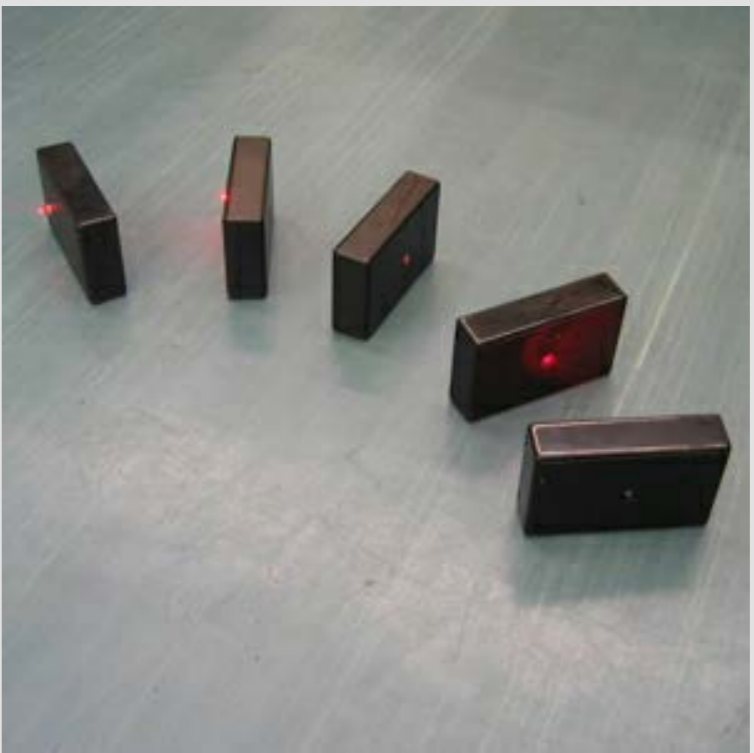
installation view, 300x300, rgb



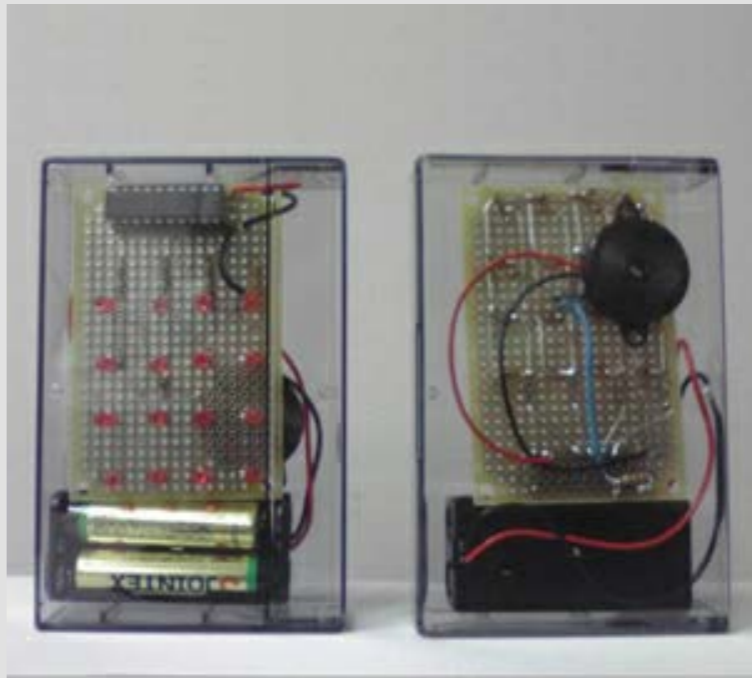
prototype, 300x300, rgb



installation view, 3344x2224, rgb



prototype, 300x300, rgb



product, 300x300, rgb



installation view, 1496x1838, rgb

DENKI DOMINO

client : personal project
yaer : 2008
format : Product, LED, light sensor, battery, speaker
description : DENKI(electric) DOMINO is a domino for light and sound.
contribution : concept, hardware, embed software
web : dominofactory.net/works/DENKI_DOMINO.html